



**Screening for Appropriate Assessment
for a
Maritime Usage Licence Application**

(MUL240008)

From MaresConnect Ltd

FOR Marine environmental surveys for the purposes of site investigation or in support of an application under Part XXI of the Act of 2000.

In the Irish Sea, off the Dublin coast between the 12 nautical mile limit and the boundary of the EEZ.

	Name	Role	Date
Prepared by:	[REDACTED]	[REDACTED]	10/12/2024
Approved by:	[REDACTED]	[REDACTED]	06/01/2025

Step 1 - Description of Project/Proposal and local site characteristics

Application Documents submitted

A number of documents were submitted by the applicant, Mares Connect Ltd., as part of their application for a Maritime Usage Licence (MUL). The documents referred to during this assessment include the MUL application form dated 27 June 2024 and the Supporting Information for Screening of Appropriate Assessment (SISAA) report dated 20 June 2024.

Brief description of the project and proposed work

On the 4 July 2024, Mares Connect Limited was granted a foreshore licence (FS007635) to carry out site investigation works within the foreshore out to the 12 nautical mile limit, in order to determine the suitability of the area for cable routing and other electrical infrastructure associated with the development of a proposed 750 megawatt electricity interconnector between Ireland and Britain. Subsequent to the submission of this Foreshore Licence application, Part 5 of the Maritime Area Planning Act 2021, as amended (the “MAP Act”) was commenced, requiring Mares Connect Limited to obtain an MUL to carry out works in the area beyond the seaward limit of the foreshore (i.e. beyond the 12nm limit of the foreshore seaward to the EEZ boundary).

Mares Connect Ltd. have now applied to MARA for a MUL to carry out site investigation survey works off the coast of county Dublin between the 12 nautical mile limit to the EEZ boundary in the Irish Sea. (Figure 1); these site investigation works are to be carried out in order to determine the suitability of the area for cable routing and other electrical infrastructure associated with the development of a proposed 750 megawatt electricity interconnector between Ireland and Britain.

The proposed site investigations works include geophysical, geotechnical, environmental sampling, over a total licence period of five years. The activities have been assessed as potentially occurring at any time of year. The proposed activities summarised in Table 1 below. Table 2 shows the predicted noise levels for the survey activities.

Table 1: Proposed marine environmental surveys and the estimated duration.

Proposed activity	Estimated duration
Geotechnical surveys – boreholes, up to 93 cone penetration tests, up to 93 vibrocores, up to 19 box cores or Van Veen grabs	2 – 4 months (multiple times)
Geophysical– side scan sonar, multibeam echo-sounder, magnetometers and sub-bottom profiler	3 months (multiple times)
Benthic surveys – 3 grab samples at 19 stations (57 total)	2-3 day period
Marine Mammal surveys- using MMO observer	Over duration of works

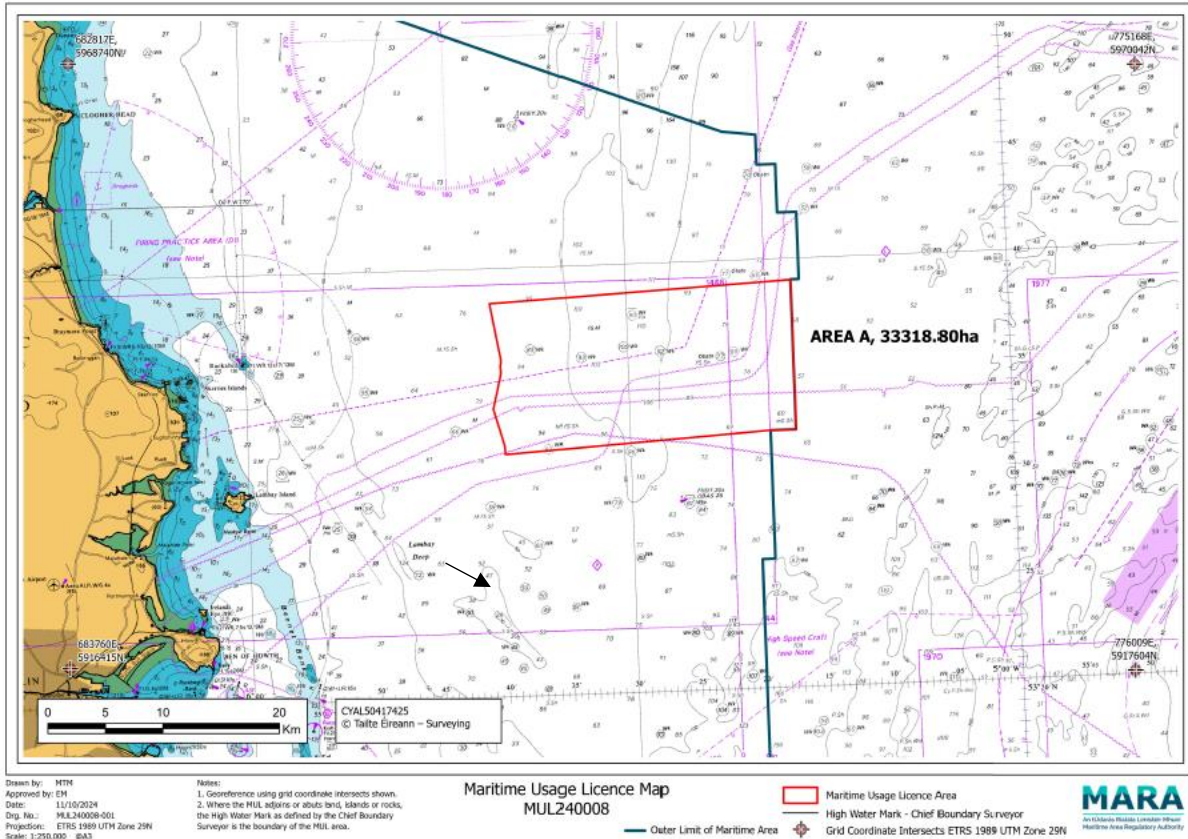


Figure 1: Map showing the proposed Maritime Usage Licence Area.

Table 2 Summary of the noise sources from geophysical and geotechnical surveys.

Noise Source	Frequency	Sound Pressure Level (dB re 1 ⁻⁴ Pa @ 1m)
Multi beam Echo sounder	200 - 700 kHz	200-228 dB
Side scan Sonar	300 - 900 kHz	228 dB
Geotechnical drilling (Rotary)	2Hz -50kHz	160dB
Shipping Noise	50 - 300 kHz	160-175 dB

Figure 2 shows proposed locations of benthic, geophysical and geotechnical sampling activities, as indicated by the applicant's submissions.

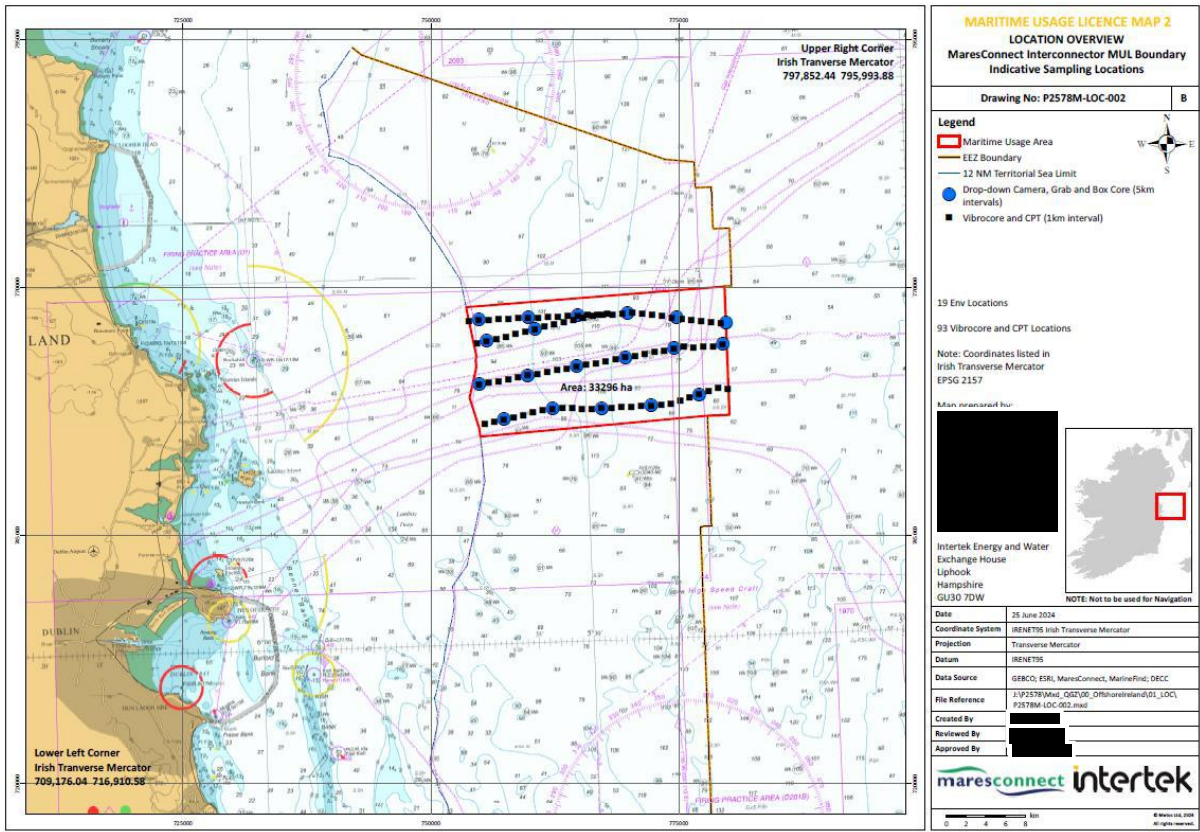


Figure 2 showing proposed locations of benthic, geophysical and geotechnical activities, as indicated by the applicants submissions.

Brief description of the site characteristics

The MUL application area lies between the 12nm limit and the boundary of the EEZ off the coast of north County Dublin, an area 33318.80 ha in size. The water depths in the MUL application area range from 70 and 100 metres and the substrate ranges between sandy mud to sand (EMODNet, 2024¹).

Step 2 - Identification of relevant Natura 2000 sites using Source-Pathway-Receptor Model and compilation of information on qualifying interests and conservation objectives.

This project is subject to screening for Appropriate Assessment to determine if it alone, or in combination with other plans or projects, is likely to cause significant effects to a European site. A European site is only at risk of likely significant effects where the Source-Pathway-Receptor link exists between the proposed development and the European site (OPR, 2021²). This includes direct, indirect and in-combination effects.

¹ <https://emodnet.ec.europa.eu/geoviewer/>

² Appropriate Assessment Screening for Development Management OPR Practice Note PN01 March 2021

Table 3 outlines the Special Areas of Conservation (SAC) and Special Protected Areas (SPA) considered and their related Qualifying Interests (QI) and Special Conservation Interests (SCI). This project is being undertaken in the marine environment and therefore only marine and coastal Natura 2000 sites were considered in this screening process. For international Natura 2000 sites, only Qualifying Interest species that are screened in for Stage 2 Appropriate Assessment have been listed in the table below. QIs and SCIs marked in bold in Table 3 have been screened in for Stage 2 appropriate Assessment.

For the relevant QI and SCIs from Natura 2000 sites, the spatial range for identified Source-Pathway-Receptors (Table 3) were considered as follows in this assessment:

- Seabird species: taken as their mean max foraging range from Woodward et al, 2019³
- Waders and other bird species from BTO, 2024⁴
- Pinnipeds: maximum foraging ranges from Carter et al, 2022⁵
- Cetaceans: from their JNCC Management units for the relevant species (JNCC, 2023)⁶.
- Habitats were assessed in the proposed MUL area only due to the nature of the activities undertaken

³ Woodward, I., Thaxter, C.B., Owen, E., Cook, A.S.C.P. 2019. Desk-based revision of seabird foraging ranges used for HRA screening. BTO Research Report 724.

⁴ <https://www.bto.org/understanding-birds/bird-families>

⁵ Carter MID, Boehme L, Cronin MA, Duck CD, Grecian WJ, Hastie GD, Jessopp M, Matthiopoulous J, McConnell BJ, Miller DL, Morris CD, Moss SEW, Thompson D, Thompson PM and Russell DJF (2022) Sympatric Seals, Satellite Tracking and Protected Areas: Habitat-Based Distribution Estimates for Conservation and Management. *Front. Mar. Sci.* 9:875869. doi: 10.3389/fmars.2022.875869

⁶ <https://data.jncc.gov.uk/data/b48b8332-349f-4358-b080-b4506384f4f7/jncc-report-734.pdf>

Table 3: European sites, Qualifying interests and Special Conservation Interests considered

European Site Code	Distance from the Proposed Development (km) or other unit used	Qualifying Interests	Connections (Source-Pathway Receptors)	Qualifying Interests or Special Conservation Interests considered further Y/N	Screened In for Stage 2 Appropriate Assessment
Rockabill to Dalkey SAC (Site Code IE003000)	Approx. 15 km	Reefs [1170]	No	No	Yes
		<i>Phocoena phocoena</i> (Harbour Porpoise) [1351]	Yes - within JNCC Cetacean Management Unit for species ⁷	Yes – possible disturbance from underwater noise	
South Dublin Bay SAC (Site Code IE000210)	Approx. 25 km	Mudflats and sandflats not covered by sea-water at low tide [1140] Annual vegetation of drift lines [1210] Salicornia and other annuals colonising mud and sand [1310] Embryonic shifting dunes [2110]	No- coastal habitats with no S-P-R	No	No
North Dublin Bay SAC (Site Code IE000206)	Approx. 25km	Mudflats and sandflats not covered by seawater at low tide [1140] Annual vegetation of drift lines [1210] Salicornia and other annuals colonising mud and sand [1310]	No- coastal habitats with no S-P-R	No	No

⁷ [JNCC Report 734: Review of Management Unit boundaries for cetaceans in UK waters \(2023\)](#)

European Site Code	Distance from the Proposed Development (km) or other unit used	Qualifying Interests	Connections (Source-Pathway Receptors)	Qualifying Interests or Special Conservation Interests considered further Y/N	Screened In for Stage 2 Appropriate Assessment
		Atlantic salt meadows (<i>Glauco-Puccinellietalia maritima</i>) [1330] Mediterranean salt meadows (<i>Juncetalia maritimi</i>) [1410] Embryonic shifting dunes [2110] Shifting dunes along the shoreline with <i>Ammophila arenaria</i> (white dunes) [2120] Fixed coastal dunes with herbaceous vegetation (grey dunes) [2130] Humid dune slacks [2190] <i>Petalophyllum ralfsii</i> (Petalwort) [1395]			
Howth Head SAC (Site Code IE000202)	Approx. 25km	Vegetated sea cliffs of the Atlantic and Baltic coasts [1230] European dry heaths [4030]	No- coastal habitats with no S-P-R	No	No
Ireland's Eye SAC (Site Code IE002193)	Approx. 25km	Perennial vegetation of stony banks [1220] Vegetated sea cliffs of the Atlantic and Baltic coasts [1230]	No- coastal habitats with no S-P-R	No	No

European Site Code	Distance from the Proposed Development (km) or other unit used	Qualifying Interests	Connections (Source-Pathway Receptors)	Qualifying Interests or Special Conservation Interests considered further Y/N	Screened In for Stage 2 Appropriate Assessment
Codling Fault Zone SAC (Site code IE003015)	Approx. 20 km	Submarine structures made by leaking gases [1180]	No- submarine habitats outside of MUL - no S-P-R	No	Yes
		<i>Phocoena phocoena</i> (Harbour Porpoise) [1351]	Yes - within JNCC Cetacean Management Unit for species	Yes – possible disturbance from underwater noise	
Lambay Island SAC (Site Code IE000204)	Approx. 15 km	Reefs [1170] Vegetated sea cliffs of the Atlantic and Baltic coasts [1230]	No- coastal and submarine habitats outside of MUL - no S-P-R	No	Yes
		<i>Phocoena phocoena</i> (Harbour Porpoise) [1351] <i>Halichoerus grypus</i> (Grey Seal) [1364] <i>Phoca vitulina</i> (Harbour Seal) [1365]	Yes - within JNCC Cetacean Management Unit for species and within foraging range for both seal species	Yes – possible disturbance from underwater noise	

European Site Code	Distance from the Proposed Development (km) or other unit used	Qualifying Interests	Connections (Source-Pathway Receptors)	Qualifying Interests or Special Conservation Interests considered further Y/N	Screened In for Stage 2 Appropriate Assessment
Blackwater Bank SAC [Site code IE002953]	>100 km	Sandbanks which are slightly covered by sea water all the time [1110]	No- submarine habitats outside of MUL - no S-P-R	No	Yes
		<i>Phocoena phocoena</i> (Harbour Porpoise) [1351]	Yes - within JNCC Cetacean Management Unit for species	Yes – possible disturbance from underwater noise	
River Boyne and River Blackwater SAC [Site code IE002299]	Approx. 40 km	Alkaline fens [7230] Alluvial forests with <i>Alnus glutinosa</i> and <i>Fraxinus excelsior</i> (Alno-Padion, Alnion incanae, Salicion albae) [91E0] <i>Lampetra fluviatilis</i> (River Lamprey) [1099] <i>Salmo salar</i> (Salmon) [1106] <i>Lutra lutra</i> (Otter) [1355]	No – coastal habitats outside of MUL, outside of otter foraging ranges and fish species not sensitive to this level of underwater noise submarine habitats outside of MUL - no S-P-R	No	No

European Site Code	Distance from the Proposed Development (km) or other unit used	Qualifying Interests	Connections (Source-Pathway Receptors)	Qualifying Interests or Special Conservation Interests considered further Y/N	Screened In for Stage 2 Appropriate Assessment
Carnsore Point SAC [Site code IE002269]	Approx 150km	Mudflats and sandflats not covered by seawater at low tide [1140] Reefs [1170]	No- submarine habitats outside of MUL - no S-P-R	No	Yes
		<i>Phocoena phocoena</i> (Harbour Porpoise) [1351]	Yes - within JNCC Cetacean Management Unit for species	Yes – possible disturbance from underwater noise	
Slaney River Valley SAC [Site code IE000781]	> 100 km	Estuaries [1130] Mudflats and sandflats not covered by seawater at low tide[1140] Atlantic salt meadows (<i>Glauco-Puccinellietalia maritima</i>)[1330] Mediterranean salt meadows (<i>Juncetalia maritimi</i>) [1410] Water courses of plain to montane levels with the Ranunculion fluitantis and Callitricho-Batrachion vegetation [3260] Old sessile oakwoods with Ilex and Blechnum in the BritishIsles[91A0]	No – coastal habitats outside of MUL, outside of otter foraging ranges and fish species not sensitive to this level of underwater noise, no S-P-R	No	Yes

European Site Code	Distance from the Proposed Development (km) or other unit used	Qualifying Interests	Connections (Source-Pathway Receptors)	Qualifying Interests or Special Conservation Interests considered further Y/N	Screened In for Stage 2 Appropriate Assessment
		<p>Alluvial forests with <i>Alnus glutinosa</i> and <i>Fraxinus excelsior</i> (Alno-Padion, Alnionincanae, Salicionalbae)[91E0] <i>Margaritifera margaritifera</i> (Freshwater Pearl Mussel) [1029] <i>Petromyzon marinus</i> (Sea Lamprey) [1095] <i>Lampetra planeri</i> (Brook Lamprey) [1096] <i>Lampetra fluviatilis</i> (River Lamprey) [1099] <i>Salmo salar</i> (Salmon) [1106] <i>Alosa fallax fallax</i> (Twaites Shad) [1103] <i>Lutra lutra</i> (Otter) [1355]</p>			
		<p><i>Phoca vitulina</i> (Harbour Seal) [1365]</p>	<p>Yes – within foraging range for Harbour Seal of 273 km</p>	<p>Yes – potential disturbance from above and underwater noise</p>	
Saltee Islands SAC [Site code IE0007071]	> 100 km	<p>Mudflats and sandflats not covered by seawater at low tide [1140] Large shallow inlets and bays [1160] Reefs [1170]</p>	No	No	Yes

European Site Code	Distance from the Proposed Development (km) or other unit used	Qualifying Interests	Connections (Source-Pathway Receptors)	Qualifying Interests or Special Conservation Interests considered further Y/N	Screened In for Stage 2 Appropriate Assessment
		Vegetated sea cliffs of the Atlantic and Baltic coasts [1230] Submerged or partially submerged sea caves[8330]			
		<i>Halichoerus grypus</i> (Grey Seal) [1364]	Yes – within foraging range for Grey Seal of 448 km	Yes – potential disturbance from above and underwater noise	
Roaringwater Bay and Islands SAC [Site code IE000101]	> 100 km	Large shallow inlets and bays [1160] Reefs [1170] Vegetated sea cliffs of the Atlantic and Baltic coasts [1230] European dry heaths [4030] Submerged or partially submerged sea caves [8330] <i>Lutra lutra</i> (Otter) [1355] <i>Halichoerus grypus</i> (Grey Seal) [1364]	No – coastal and submarine habitats outside of MUL, outside of otter and Grey seal foraging ranges - no S-P-R	No	Yes

European Site Code	Distance from the Proposed Development (km) or other unit used	Qualifying Interests	Connections (Source-Pathway Receptors)	Qualifying Interests or Special Conservation Interests considered further Y/N	Screened In for Stage 2 Appropriate Assessment
		<i>Phocoena phocoena</i> (Harbour Porpoise) [1351]	Yes - within JNCC Cetacean Management Unit for species	Yes – possible disturbance from underwater noise	
Blasket Islands SAC [Site code IE002172]	> 100 km	Reefs [1170] Vegetated sea cliffs of the Atlantic and Baltic coasts [1230] European dry heaths [4030] Submerged or partially submerged sea caves [8330] <i>Halichoerus grypus</i> (Grey Seal) [1364]	No – coastal and submarine habitats outside of MUL, outside of Grey seal foraging ranges - no S-P-R	No	Yes
		<i>Phocoena phocoena</i> (Harbour Porpoise) [1351]	Yes - within JNCC Cetacean Management Unit for species	Yes – possible disturbance from underwater noise	
Hook Head SAC [Site code IE000764]	> 100 km	Large shallow inlets and bays [1160] Reefs [1170] Vegetated sea cliffs of the Atlantic and Baltic coasts [1230]	No – coastal and submarine habitats outside of MUL - no S-P-R	No	Yes

European Site Code	Distance from the Proposed Development (km) or other unit used	Qualifying Interests	Connections (Source-Pathway Receptors)	Qualifying Interests or Special Conservation Interests considered further Y/N	Screened In for Stage 2 Appropriate Assessment
		<p><i>Tursiops truncatus</i> (Common Bottlenose Dolphin) [1349] <i>Phocoena phocoena</i> (Harbour Porpoise) [1351]</p>	<p>Yes - within JNCC Cetacean Management Unit for both species</p>	<p>Yes – possible disturbance from underwater noise</p>	
<p>Kenmare River SAC [Site code IE002158]</p>	<p>> 100 km</p>	<p>Large shallow inlets and bays [1160] Reefs [1170] Perennial vegetation of stony banks [1220] Vegetated sea cliffs of the Atlantic and Baltic coasts [1230] Atlantic salt meadows (<i>Glauco-Puccinellietalia maritimae</i>) [1330] Mediterranean salt meadows (<i>Juncetalia maritimi</i>) [1410] Shifting dunes along the shoreline with <i>Ammophila arenaria</i> (white dunes) [2120] Fixed coastal dunes with herbaceous vegetation (grey dunes) [2130] European dry heaths [4030] <i>Juniperus communis</i> formations on heaths or calcareous grasslands [5130]</p>	<p>No – coastal and submarine habitats outside of MUL, outside of Otter and Harbour seal foraging ranges - no S-P-R</p>	<p>No</p>	<p>Yes</p>

European Site Code	Distance from the Proposed Development (km) or other unit used	Qualifying Interests	Connections (Source-Pathway Receptors)	Qualifying Interests or Special Conservation Interests considered further Y/N	Screened In for Stage 2 Appropriate Assessment
		Calaminarian grasslands of the <i>Violetalia calaminariae</i> [6130] Submerged or partially submerged sea caves [8330] <i>Vertigo angustior</i> (Narrow-mouthed Whorl Snail) [1014] <i>Rhinolophus hipposideros</i> (Lesser Horseshoe Bat) [1303] <i>Lutra lutra</i> (Otter) [1355] <i>Phoca vitulina</i> (Harbour Seal) [1365]			
		<i>Phocoena phocoena</i> (Harbour Porpoise) [1351]	Yes - within JNCC Cetacean Management Unit for species	Yes – possible disturbance from underwater noise	
Belgica Mound Province SAC [Site code IE002327]	> 100 km	Reefs [1170] <i>Tursiops truncatus</i> (Common Bottlenose Dolphin) [1349]	No –submarine habitats outside of MUL and outside of relevant Common Bottlenose Dolphin	No	Yes

European Site Code	Distance from the Proposed Development (km) or other unit used	Qualifying Interests	Connections (Source-Pathway Receptors)	Qualifying Interests or Special Conservation Interests considered further Y/N	Screened In for Stage 2 Appropriate Assessment
			Management unit - no S-P-R		
		<i>Phocoena phocoena</i> (Harbour Porpoise) [1351]	Yes - within JNCC Cetacean Management Unit for species	Yes – possible disturbance from underwater noise	
Inishmore Island SAC [Site code IE000213]	> 100 km	Coastal lagoons [1150] Reefs [1170] Perennial vegetation of stony banks [1220] Vegetated sea cliffs of the Atlantic and Baltic coasts [1230] Embryonic shifting dunes [2110] Shifting dunes along the shoreline with <i>Ammophila arenaria</i> (white dunes) [2120] Fixed coastal dunes with herbaceous vegetation (grey dunes) [2130] Dunes with <i>Salix repens</i> ssp. <i>argentea</i> (<i>Salicion arenariae</i>) [2170] Humid dune slacks [2190] Machairs (* in Ireland) [21A0]	No – coastal and submarine habitats outside of MUL - no S-P-R	No	Yes

European Site Code	Distance from the Proposed Development (km) or other unit used	Qualifying Interests	Connections (Source-Pathway Receptors)	Qualifying Interests or Special Conservation Interests considered further Y/N	Screened In for Stage 2 Appropriate Assessment
		European dry heaths [4030] Alpine and Boreal heaths [4060] Semi-natural dry grasslands and scrubland facies on calcareous substrates (<i>Festuco-Brometalia</i>) (* important orchid sites) [6210] Lowland hay meadows (<i>Alopecurus pratensis</i> , <i>Sanguisorba officinalis</i>) [6510] Limestone pavements [8240] Submerged or partially submerged sea caves [8330] <i>Vertigo angustior</i> (Narrow-mouthed Whorl Snail) [1014]			
		<i>Phocoena phocoena</i> (Harbour Porpoise) [1351]	Yes - within JNCC Cetacean Management Unit for species	Yes – possible disturbance from underwater noise	
Kilkieran Bay and Islands SAC [Site code IE002111]	> 100 km	Mudflats and sandflats not covered by seawater at low tide [1140] Coastal lagoons [1150] Large shallow inlets and bays [1160]	No – coastal and submarine habitats outside of MUL, outside of Otter and	No	Yes

European Site Code	Distance from the Proposed Development (km) or other unit used	Qualifying Interests	Connections (Source-Pathway Receptors)	Qualifying Interests or Special Conservation Interests considered further Y/N	Screened In for Stage 2 Appropriate Assessment
		Reefs [1170] Atlantic salt meadows (<i>Glauco-Puccinellietalia maritima</i>) [1330] Mediterranean salt meadows (<i>Juncetalia maritimi</i>) [1410] Machairs (* in Ireland) [21A0] Oligotrophic to mesotrophic standing waters with vegetation of the <i>Littorelletea uniflorae</i> and/or <i>Isoeto-Nanojuncetea</i> [3130] Lowland hay meadows (<i>Alopecurus pratensis</i> , <i>Sanguisorba officinalis</i>) [6510] <i>Lutra lutra</i> (Otter) [1355] <i>Phoca vitulina</i> (Harbour Seal) [1365] <i>Najas flexilis</i> (Slender Naiad) [1833]	Harbour seal foraging ranges - no S-P-R		
		<i>Phocoena phocoena</i> (Harbour Porpoise) [1351]	Yes - within JNCC Cetacean Management Unit for species	Yes – possible disturbance from underwater noise	
West Connacht Coast SAC [Site code IE002998]	> 100 km	<i>Tursiops truncatus</i> (Common Bottlenose Dolphin) [1349]	No – outside of relevant Common	No	Yes

European Site Code	Distance from the Proposed Development (km) or other unit used	Qualifying Interests	Connections (Source-Pathway Receptors)	Qualifying Interests or Special Conservation Interests considered further Y/N	Screened In for Stage 2 Appropriate Assessment
			Bottlenose dolphin management unit		
		<i>Phocoena phocoena</i> (Harbour Porpoise) [1351]	Yes - within JNCC Cetacean Management Unit for species	Yes – possible disturbance from underwater noise	
Bunduff Lough and Machair/Trawalua/Mullaghmore SAC [000625]	> 100 km	Mudflats and sandflats not covered by seawater at low tide [1140] Large shallow inlets and bays [1160] Reefs [1170] Shifting dunes along the shoreline with <i>Ammophila arenaria</i> (white dunes) [2120] Fixed coastal dunes with herbaceous vegetation (grey dunes) [2130] Humid dune slacks [2190] Machairs (* in Ireland) [21A0] <i>Juniperus communis</i> formations on heaths or calcareous grasslands [5130]	No – coastal and submarine habitats outside of MUL - no S-P-R	No	Yes

European Site Code	Distance from the Proposed Development (km) or other unit used	Qualifying Interests	Connections (Source-Pathway Receptors)	Qualifying Interests or Special Conservation Interests considered further Y/N	Screened In for Stage 2 Appropriate Assessment
		Semi-natural dry grasslands and scrubland facies on calcareous substrates (<i>Festuco-Brometalia</i>) (* important orchid sites) [6210] Alkaline fens [7230] <i>Euphydryas aurinia</i> (Marsh Fritillary) [1065] <i>Petalophyllum ralfsii</i> (Petalwort) [1395]			
		<i>Phocoena phocoena</i> (Harbour Porpoise) [1351]	Yes - within JNCC Cetacean Management Unit for species	Yes – possible disturbance from underwater noise	
Lleyn Peninsula and the Sarnau SAC [Site code UK0013117]	>100km	<i>Tursiops truncatus</i> (Common Bottlenose Dolphin) [1349] <i>Halichoerus grypus</i> (Grey Seal) [1364]	Yes - within JNCC Cetacean Management Unit for species and within foraging range for Grey Seal	Yes – possible disturbance from above and underwater noise	Yes
The Maidens [Site code UK0030384]	>100km	<i>Halichoerus grypus</i> (Grey Seal) [1364]	Yes – within foraging range for Grey Seal	Yes – possible disturbance from	Yes

European Site Code	Distance from the Proposed Development (km) or other unit used	Qualifying Interests	Connections (Source-Pathway Receptors)	Qualifying Interests or Special Conservation Interests considered further Y/N	Screened In for Stage 2 Appropriate Assessment
			of 448 km (Carter et al, 2022)	above and underwater noise	
The Murlough SAC [Site code UK0016612]	>100km	<i>Phoca vitulina</i> (Harbour seal) [1365]	Yes – within foraging range for Harbour Seal of 273 km (Carter et al, 2022)	Yes – possible disturbance from above and underwater noise	Yes
Strangford Lough SAC [Site code UK0016608]	>100km	<i>Phoca vitulina</i> (Harbour seal) [1365]	Yes – within foraging range for Harbour Seal of 273 km (Carter et al, 2022)	Yes – possible disturbance from above and underwater noise	Yes
The North Channel SAC [Site code UK0030399]	>100km	<i>Phocoena phocoena</i> (Harbour Porpoise) [1351]	Yes - within JNCC Cetacean Management Unit for species	Yes – possible disturbance from above and underwater noise	Yes
Cardigan Bay SAC [Site code UK0012712]	>100km	<i>Tursiops truncatus</i> (Common Bottlenose Dolphin) [1349] <i>Halichoerus grypus</i> (Grey Seal) [1364]	Yes - within JNCC Cetacean Management Unit for species and	Yes – possible disturbance from above and underwater noise	Yes

European Site Code	Distance from the Proposed Development (km) or other unit used	Qualifying Interests	Connections (Source-Pathway Receptors)	Qualifying Interests or Special Conservation Interests considered further Y/N	Screened In for Stage 2 Appropriate Assessment
			within foraging range for Grey Seal		
North Anglesey Marine SAC [Site code UK0030398]	75 – 100 km	<i>Phocoena phocoena</i> (Harbour Porpoise) [1351]	Yes - within JNCC Cetacean Management Unit for species	Yes – possible disturbance from underwater noise	Yes
West Wales Marine SAC [Site code UK0030397]	>100km	<i>Phocoena phocoena</i> (Harbour Porpoise) [1351]	Yes - within JNCC Cetacean Management Unit for species	Yes – possible disturbance from underwater noise	Yes
Bristol Channel Approaches SAC [Site code UK003039]	>100km	<i>Phocoena phocoena</i> (Harbour Porpoise) [1351]	Yes - within JNCC Cetacean Management Unit for species	Yes – possible disturbance from underwater noise	Yes
Récifs et landes de la Hague SAC [Site code FR2500084]	>100km	<i>Phocoena phocoena</i> (Harbour Porpoise) [1351]	Yes - within JNCC Cetacean Management Unit for species	Yes – possible disturbance from underwater noise	Yes

European Site Code	Distance from the Proposed Development (km) or other unit used	Qualifying Interests	Connections (Source-Pathway Receptors)	Qualifying Interests or Special Conservation Interests considered further Y/N	Screened In for Stage 2 Appropriate Assessment
Anse de Vauville SAC [Site code FR2502019]	>100km	<i>Phocoena phocoena</i> (Harbour Porpoise) [1351]	Yes - within JNCC Cetacean Management Unit for species	Yes – possible disturbance from underwater noise	Yes
Banc et récifs de Surtainville SAC [Site code FR2502018]	>100km	<i>Phocoena phocoena</i> (Harbour Porpoise) [1351]	Yes - within JNCC Cetacean Management Unit for species	Yes – possible disturbance from underwater noise	Yes
Chausey [Site code FR2500079]	>100km	<i>Phocoena phocoena</i> (Harbour Porpoise) [1351]	Yes - within JNCC Cetacean Management Unit for species	Yes – possible disturbance from underwater noise	Yes
Baie du Mont Saint-Michel [Site code FR2500077]	>100km	<i>Phocoena phocoena</i> (Harbour Porpoise) [1351]	Yes - within JNCC Cetacean Management Unit for species	Yes – possible disturbance from underwater noise	Yes
Estuaire de la Rance SAC [Site code FR5300061]	>100km	<i>Phocoena phocoena</i> (Harbour Porpoise) [1351]	Yes - within JNCC Cetacean	Yes – possible disturbance from underwater noise	Yes

European Site Code	Distance from the Proposed Development (km) or other unit used	Qualifying Interests	Connections (Source-Pathway Receptors)	Qualifying Interests or Special Conservation Interests considered further Y/N	Screened In for Stage 2 Appropriate Assessment
			Management Unit for species		
Baie de Lancieux, Baie de l'Arguenon, Archipel de Saint Malo et Dinard [Site code FR5300012]	>100km	<i>Phocoena phocoena</i> (Harbour Porpoise) [1351]	Yes - within JNCC Cetacean Management Unit for species	Yes – possible disturbance from underwater noise	Yes
Cap d'Erquy-Cap Fréhel [Site code FR5300011]	>100km	<i>Phocoena phocoena</i> (Harbour Porpoise) [1351]	Yes - within JNCC Cetacean Management Unit for species	Yes – possible disturbance from underwater noise	Yes
Baie de Saint-Brieuc [Site code FR5300066]	>100km	<i>Phocoena phocoena</i> (Harbour Porpoise) [1351]	Yes - within JNCC Cetacean Management Unit for species	Yes – possible disturbance from underwater noise	Yes
Tregor Goëlo [Site code FR5310070]	>100km	<i>Phocoena phocoena</i> (Harbour Porpoise) [1351]	Yes - within JNCC Cetacean Management Unit for species	Yes – possible disturbance from underwater noise	Yes

European Site Code	Distance from the Proposed Development (km) or other unit used	Qualifying Interests	Connections (Source-Pathway Receptors)	Qualifying Interests or Special Conservation Interests considered further Y/N	Screened In for Stage 2 Appropriate Assessment
Côte de Granit rose-Sept-Iles [Site code FR5300009]	>100km	<i>Phocoena phocoena</i> (Harbour Porpoise) [1351]	Yes - within JNCC Cetacean Management Unit for species	Yes – possible disturbance from underwater noise	Yes
Nord Bretagne DH [Site code FR2502022]	>100km	<i>Phocoena phocoena</i> (Harbour Porpoise) [1351]	Yes - within JNCC Cetacean Management Unit for species	Yes – possible disturbance from underwater noise	Yes
Baie de Morlaix SAC [Site code FR5300015]	>100km	<i>Phocoena phocoena</i> (Harbour Porpoise) [1351]	Yes - within JNCC Cetacean Management Unit for species	Yes – possible disturbance from underwater noise	Yes
Abers - Côte des legends [Site code FR5300017]	>100km	<i>Phocoena phocoena</i> (Harbour Porpoise) [1351]	Yes - within JNCC Cetacean Management Unit for species	Yes – possible disturbance from underwater noise	Yes
Ouessant-Molène [Site code FR5300018]	>100km	<i>Phocoena phocoena</i> (Harbour Porpoise) [1351]	Yes - within JNCC Cetacean	Yes – possible disturbance from underwater noise	Yes

European Site Code	Distance from the Proposed Development (km) or other unit used	Qualifying Interests	Connections (Source-Pathway Receptors)	Qualifying Interests or Special Conservation Interests considered further Y/N	Screened In for Stage 2 Appropriate Assessment
			Management Unit for species		
Côtes de Crozon [Site code FR5302006]	>100km	<i>Phocoena phocoena</i> (Harbour Porpoise) [1351]	Yes - within JNCC Cetacean Management Unit for species	Yes – possible disturbance from underwater noise	Yes
Mers Celtiques – Talus du golfe de Gascogne [Site code FR5302015]	>100km	<i>Phocoena phocoena</i> (Harbour Porpoise) [1351]	Yes - within JNCC Cetacean Management Unit for species	Yes – possible disturbance from underwater noise	Yes
Rivière Leguer, forêts de Beffou, Coat an Noz et Coat an Hay [Site code FR5300008]	>100km	<i>Phocoena phocoena</i> (Harbour Porpoise) [1351]	Yes - within JNCC Cetacean Management Unit for species	Yes – possible disturbance from underwater noise	Yes
Estuaire de la Rance [Site code FR53000061]	>100km	<i>Phocoena phocoena</i> (Harbour Porpoise) [1351]	Yes - within JNCC Cetacean Management Unit for species	Yes – possible disturbance from underwater noise	Yes

European Site Code	Distance from the Proposed Development (km) or other unit used	Qualifying Interests	Connections (Source-Pathway Receptors)	Qualifying Interests or Special Conservation Interests considered further Y/N	Screened In for Stage 2 Appropriate Assessment
Chaussée de Sein [Site code FR5302007]	>100km	<i>Phocoena phocoena</i> (Harbour Porpoise) [1351]	Yes - within JNCC Cetacean Management Unit for species	Yes – possible disturbance from underwater noise	Yes
Récifs du talus du golfe de Gascogne [Site code FR5302016]	>100km	<i>Phocoena phocoena</i> (Harbour Porpoise) [1351]	Yes - within JNCC Cetacean Management Unit for species	Yes – possible disturbance from underwater noise	Yes
North West Irish Sea SPA (Site Code IE004236)	Overlaps with MUL site	Red-throated Diver (<i>Gavia stellata</i>) [A001] Great Northern Diver (<i>Gavia immer</i>) [A003] Fulmar (<i>Fulmarus glacialis</i>) [A009] Manx Shearwater (<i>Puffinus puffinus</i>) [A013] Cormorant (<i>Phalacrocorax carbo</i>) [A017] Shag (<i>Phalacrocorax aristotelis</i>) [A018] Common Scoter (<i>Melanitta nigra</i>) [A065] Little Gull (<i>Larus minutus</i>) [A177] Black-headed Gull (<i>Chroicocephalus ridibundus</i>) [A179] Common Gull (<i>Larus canus</i>) [A182] Lesser Black-backed Gull (<i>Larus fuscus</i>) [A183]	Yes – within foraging range for species in bold text – S-P-R identified	Yes – possible above and under water noise disturbance	Yes

European Site Code	Distance from the Proposed Development (km) or other unit used	Qualifying Interests	Connections (Source-Pathway Receptors)	Qualifying Interests or Special Conservation Interests considered further Y/N	Screened In for Stage 2 Appropriate Assessment
		Herring Gull (<i>Larus argentatus</i>) [A184] Great Black-backed Gull (<i>Larus marinus</i>) [A187] Kittiwake (<i>Rissa tridactyla</i>) [A188] Roseate Tern (<i>Sterna dougallii</i>) [A192] Common Tern (<i>Sterna hirundo</i>) [A193] Arctic Tern (<i>Sterna paradisaea</i>) [A194] Little Tern (<i>Sterna albifrons</i>) [A195] Guillemot (<i>Uria aalge</i>) [A199] Razorbill (<i>Alca torda</i>) [A200] Puffin (<i>Fratercula arctica</i>) [A204]			
Howth Head Coast SPA (Site Code IE004113)	Approx 15 km	Kittiwake (<i>Rissa tridactyla</i>) [A188]	Yes – within foraging range for species in bold text – S-P-R identified	Yes – possible above and under water noise disturbance	Yes
Ireland's Eye SPA (Site Code IE004117)	Approx 15 km	Herring Gull (<i>Larus argentatus</i>) [A184] Kittiwake (<i>Rissa tridactyla</i>) [A188] Cormorant (<i>Phalacrocorax carbo</i>) [A017] Guillemot (<i>Uria aalge</i>) [A199] Razorbill (<i>Alca torda</i>) [A200]	Yes – within foraging range for species in bold text – S-P-R identified	Yes – possible disturbance from above and under water noise	Yes

European Site Code	Distance from the Proposed Development (km) or other unit used	Qualifying Interests	Connections (Source-Pathway Receptors)	Qualifying Interests or Special Conservation Interests considered further Y/N	Screened In for Stage 2 Appropriate Assessment
Baldoyle Bay SPA (Site Code IE	Approx 25 km	Light-bellied Brent Goose (<i>Branta bernicla hrota</i>) [A046] Shelduck (<i>Tadorna tadorna</i>) [A048] Ringed Plover (<i>Charadrius hiaticula</i>) [A137] Golden Plover (<i>Pluvialis apricaria</i>) [A140] Grey Plover (<i>Pluvialis squatarola</i>) [A141] Bar-tailed Godwit (<i>Limosa lapponica</i>) [A157] Wetland and Waterbirds [A999]	No – no habitat or foraging range overlap between listed birds and proposed MUL area – no S-P-R	No	No
Dalkey Islands SPA (Site Code IE004172)	Approx 25 km	Roseate Tern (<i>Sterna dougallii</i>) [A192] Common Tern (<i>Sterna hirundo</i>) [A193] Arctic Tern (<i>Sterna paradisaea</i>) [A194]	Yes – within foraging range for species in bold text – S-P-R identified	Yes – possible disturbance from above and under water noise	Yes
Lambay Island SPA (Site Code IE004069)	Approx 15 km	Fulmar (<i>Fulmarus glacialis</i>) [A009] Greylag Goose (<i>Anser anser</i>) [A043] Lesser Black-backed Gull (<i>Larus fuscus</i>) [A183] Herring Gull (<i>Larus argentatus</i>) [A184] Kittiwake (<i>Rissa tridactyla</i>) [A188] Cormorant (<i>Phalacrocorax carbo</i>) [A017] Shag (<i>Phalacrocorax aristotelis</i>) [A018] Guillemot (<i>Uria aalge</i>) [A199]	Yes – within foraging range for species in bold text – S-P-R identified	Yes – possible disturbance from above and under water noise	Yes

European Site Code	Distance from the Proposed Development (km) or other unit used	Qualifying Interests	Connections (Source-Pathway Receptors)	Qualifying Interests or Special Conservation Interests considered further Y/N	Screened In for Stage 2 Appropriate Assessment
		Razorbill (<i>Alca torda</i>) [A200] Puffin (<i>Fratercula arctica</i>) [A204]			
Malahide Estuary SPA (Site Code IE004025)	Approx 25 km	Great Crested Grebe (<i>Podiceps cristatus</i>) [A005] Light-bellied Brent Goose (<i>Branta bernicla hrota</i>) [A046] Shelduck (<i>Tadorna tadorna</i>) [A048] Pintail (<i>Anas acuta</i>) [A054] Goldeneye (<i>Bucephala clangula</i>) [A067] Red-breasted Merganser (<i>Mergus serrator</i>) [A069] Oystercatcher (<i>Haematopus ostralegus</i>) [A130] Golden Plover (<i>Pluvialis apricaria</i>) [A140] Grey Plover (<i>Pluvialis squatarola</i>) [A141] Knot (<i>Calidris canutus</i>) [A143] Dunlin (<i>Calidris alpina</i>) [A149] Black-tailed Godwit (<i>Limosa limosa</i>) [A156] Bar-tailed Godwit (<i>Limosa lapponica</i>) [A157] Redshank (<i>Tringa totanus</i>) [A162] Wetland and Waterbirds [A999]	No – no habitat or foraging range overlap between listed birds and proposed MUL area – no S-P-R	No	No

European Site Code	Distance from the Proposed Development (km) or other unit used	Qualifying Interests	Connections (Source-Pathway Receptors)	Qualifying Interests or Special Conservation Interests considered further Y/N	Screened In for Stage 2 Appropriate Assessment
Rogerstown Estuary SPA (Site Code IE004015)	Approx 25 km	Greylag Goose (<i>Anser anser</i>) [A043] Light-bellied Brent Goose (<i>Branta bernicla hrota</i>) [A046] Shelduck (<i>Tadorna tadorna</i>) [A048] Shoveler (<i>Anas clypeata</i>) [A056] Oystercatcher (<i>Haematopus ostralegus</i>) [A130] Ringed Plover (<i>Charadrius hiaticula</i>) [A137] Grey Plover (<i>Pluvialis squatarola</i>) [A141] Knot (<i>Calidris canutus</i>) [A143] Dunlin (<i>Calidris alpina</i>) [A149] Black-tailed Godwit (<i>Limosa limosa</i>) [A156] Redshank (<i>Tringa totanus</i>) [A162] Wetland and Waterbirds [A999]	No – no habitat or foraging range overlap between listed birds and proposed MUL area – no S-P-R	No	No
Rockabill SPA (Site code:004014)	Approx 15 km	Purple Sandpiper (<i>Calidris maritima</i>) [A148]	No – no habitat or foraging range overlap between listed birds and proposed MUL area – no S-P-R	No	No

European Site Code	Distance from the Proposed Development (km) or other unit used	Qualifying Interests	Connections (Source-Pathway Receptors)	Qualifying Interests or Special Conservation Interests considered further Y/N	Screened In for Stage 2 Appropriate Assessment
		Roseate Tern (<i>Sterna dougallii</i>) [A192] Common Tern (<i>Sterna hirundo</i>) [A193] Arctic Tern (<i>Sterna paradisaea</i>) [A194]	Yes – within foraging range for species in bold text – S-P-R identified	Yes – possible above and below water noise disturbance	Yes
Skerries Islands SPA (Site code: 004122)	Approx 25 km	Cormorant (<i>Phalacrocorax carbo</i>) [A017] Shag (<i>Phalacrocorax aristotelis</i>) [A018] Light-bellied Brent Goose (<i>Branta bernicla hrota</i>) [A046] Purple Sandpiper (<i>Calidris maritima</i>) [A148] Turnstone (<i>Arenaria interpres</i>) [A169]	No – no habitat or foraging range overlap between listed birds and proposed MUL area – no S-P-R	No	No
		Herring Gull (<i>Larus argentatus</i>) [A184]	Yes – foraging range overlap for species in bold text – S-P-R identified	Yes – possible above and below water noise disturbance	Yes
River Nanny Estuary and Shore SPA (Site code: 004158)	Approx 25 km	Oystercatcher (<i>Haematopus ostralegus</i>) [A130] Ringed Plover (<i>Charadrius hiaticula</i>) [A137] Golden Plover (<i>Pluvialis apricaria</i>) [A140]	No – no habitat or foraging range overlap between	No	No

European Site Code	Distance from the Proposed Development (km) or other unit used	Qualifying Interests	Connections (Source-Pathway Receptors)	Qualifying Interests or Special Conservation Interests considered further Y/N	Screened In for Stage 2 Appropriate Assessment
		Knot (<i>Calidris canutus</i>) [A143] Sanderling (<i>Calidris alba</i>) [A144] Wetland and Waterbirds [A999]	listed birds and proposed MUL area – no S-P-R		Yes
		Herring Gull (<i>Larus argentatus</i>) [A184]	Yes – foraging range overlap for species in bold text – S-P-R identified	Yes – possible above and below water noise disturbance	
North Bull Island SPA (Site Code IE004006)	Approx 30 km	Light-bellied Brent Goose (<i>Branta bernicla hrota</i>) [A046] Shelduck (<i>Tadorna tadorna</i>) [A048] Teal (<i>Anas crecca</i>) [A052] Pintail (<i>Anas acuta</i>) [A054] Shoveler (<i>Anas clypeata</i>) [A056] Oystercatcher (<i>Haematopus ostralegus</i>) [A130] Golden Plover (<i>Pluvialis apricaria</i>) [A140] Grey Plover (<i>Pluvialis squatarola</i>) [A141] Knot (<i>Calidris canutus</i>) [A143] Sanderling (<i>Calidris alba</i>) [A144] Dunlin (<i>Calidris alpina</i>) [A149]	No – no habitat or foraging range overlap between listed birds and proposed MUL area – no S-P-R	No	No

European Site Code	Distance from the Proposed Development (km) or other unit used	Qualifying Interests	Connections (Source-Pathway Receptors)	Qualifying Interests or Special Conservation Interests considered further Y/N	Screened In for Stage 2 Appropriate Assessment
		Black-tailed Godwit (<i>Limosa limosa</i>) [A156] Bar-tailed Godwit (<i>Limosa lapponica</i>) [A157] Curlew (<i>Numenius arquata</i>) [A160] Redshank (<i>Tringa totanus</i>) [A162] Turnstone (<i>Arenaria interpres</i>) [A169] Black-headed Gull (<i>Chroicocephalus ridibundus</i>) [A179] Wetland and Waterbirds [A999]			
South Dublin Bay and River Tolka SPA (Site IE004024)	Approx 35 km	Light-bellied Brent Goose (<i>Branta bernicla hrota</i>) [A046] Oystercatcher (<i>Haematopus ostralegus</i>) [A130] Ringed Plover (<i>Charadrius hiaticula</i>) [A137] Grey Plover (<i>Pluvialis squatarola</i>) [A141] Knot (<i>Calidris canutus</i>) [A143] Sanderling (<i>Calidris alba</i>) [A144] Dunlin (<i>Calidris alpina</i>) [A149] Bar-tailed Godwit (<i>Limosa lapponica</i>) [A157] Redshank (<i>Tringa totanus</i>) [A162] Black-headed Gull (<i>Chroicocephalus ridibundus</i>) [A179] Roseate Tern (<i>Sterna dougallii</i>) [A192]	No – no habitat or foraging range overlap between listed birds and proposed MUL area – no S-P-R	No	No

European Site Code	Distance from the Proposed Development (km) or other unit used	Qualifying Interests	Connections (Source-Pathway Receptors)	Qualifying Interests or Special Conservation Interests considered further Y/N	Screened In for Stage 2 Appropriate Assessment
		Common Tern (<i>Sterna hirundo</i>) [A193] Wetland and Waterbirds [A999] Arctic Tern (<i>Sterna paradisaea</i>) [A194]	Yes – within foraging range for species in bold text – S-P-R identified	Yes – possible above and under water noise disturbance	Yes
Dundalk Bay SPA (Site code: 004026)	Approx 40 km	Great Crested Grebe (<i>Podiceps cristatus</i>) [A005] Greylag Goose (<i>Anser anser</i>) [A043] Light-bellied Brent Goose (<i>Branta bernicla hrota</i>) [A046] Shelduck (<i>Tadorna tadorna</i>) [A048] Teal (<i>Anas crecca</i>) [A052] Mallard (<i>Anas platyrhynchos</i>) [A053] Pintail (<i>Anas acuta</i>) [A054] Common Scoter (<i>Melanitta nigra</i>) [A065] Red-breasted Merganser (<i>Mergus serrator</i>) [A069] Oystercatcher (<i>Haematopus ostralegus</i>) [A130] Ringed Plover (<i>Charadrius hiaticula</i>) [A137] Golden Plover (<i>Pluvialis apricaria</i>) [A140] Grey Plover (<i>Pluvialis squatarola</i>) [A141]	No – no habitat or foraging range overlap between listed birds and proposed MUL area – no S-P-R	No	No

European Site Code	Distance from the Proposed Development (km) or other unit used	Qualifying Interests	Connections (Source-Pathway Receptors)	Qualifying Interests or Special Conservation Interests considered further Y/N	Screened In for Stage 2 Appropriate Assessment
			bold text – S-P-R identified	water noise disturbance	
Wickow Head SPA (Site code: 004127)	Approx 70 km	Kittiwake (<i>Rissa tridactyla</i>) [A188]	Yes – within foraging range for species in bold text – S-P-R identified	Yes – possible above and below water noise disturbance	Yes
Seas off Wexford SPA (site code IE0004237)	Approx 120 km	Red-throated Diver (<i>Gavia stellata</i>) [A001] Manx Shearwater (<i>Puffinus puffinus</i>) [A013] Cormorant (<i>Phalacrocorax carbo</i>) [A017] Shag (<i>Phalacrocorax aristotelis</i>) [A018] Common Scoter (<i>Melanitta nigra</i>) [A065] Mediterranean Gull (<i>Larus melanocephalus</i>) [A176] Black-headed Gull (<i>Chroicocephalus ridibundus</i>) [A179] Sandwich Tern (<i>Sterna sandvicensis</i>) [A191] Roseate Tern (<i>Sterna dougallii</i>) [A192] Common Tern (<i>Sterna hirundo</i>) [A193] Arctic Tern (<i>Sterna paradisaea</i>) [A194] Little Tern (<i>Sterna albifrons</i>) [A195]	No – no habitat or foraging range overlap between listed birds and proposed MUL area – no S-P-R	No	No

European Site Code	Distance from the Proposed Development (km) or other unit used	Qualifying Interests	Connections (Source-Pathway Receptors)	Qualifying Interests or Special Conservation Interests considered further Y/N	Screened In for Stage 2 Appropriate Assessment
		<p>Herring Gull (<i>Larus argentatus</i>) [A184]</p> <p>Kittiwake (<i>Rissa tridactyla</i>) [A188] Guillemot (<i>Uria aalge</i>) [A199] Razorbill (<i>Alca torda</i>) [A200] Puffin (<i>Fratercula arctica</i>) [A204] Lesser Black-backed Gull (<i>Larus fuscus</i>) [A183] Gannet (<i>Morus bassanus</i>) [A016] Fulmar (<i>Fulmarus glacialis</i>) [A009]Black-headed Gull (<i>Chroicocephalus ridibundus</i>) [A179] Common Gull (<i>Larus canus</i>) [A182] Herring Gull (<i>Larus argentatus</i>) [A184]</p>	<p>Yes – within foraging range for species in bold text – S-P-R identified</p>	<p>Yes – possible above and under water noise disturbance</p>	<p>Yes</p>

Step 3 Assessment of likely significant effects

- (a) Identify all potential direct and indirect impacts that may have an effect on the conservation objectives of a European site, taking into account the size and scale of the project

Impacts	Possible significance of impacts (duration, magnitude, etc.)
Disturbance from underwater noise	Possible temporal impacts on marine mammals, fish and birds.
Visual and above water noise disturbance.	Possible temporal impacts on birds and seals.

In-combination effects

MARA has developed a stepwise approach for identifying other In-Combination plans and projects. Using professional and scientific judgement, the key steps for assessing cumulative effects are as follows:

1. Defining the Cumulative Effects Spatial Scope (CESS)
2. Defining the Cumulative Effects Temporal Scope (CETS)
3. Impact identification
4. Pathway identification
5. Prediction
6. Identification of Plans or Projects that could act in combination
7. Screening Stage Cumulative Effects Assessment conclusion
8. Managing cumulative impacts - to be carried out as part of Stage 2 AA process

The CESS has been defined as 5 km in this case and the CETS as 5 years. The definition of the CESS is based on acoustic survey equipment effective deterrence ranges as per [JNCC Guidance on Assessing the Significance of Noise Disturbance against Harbour Porpoise SACs Conservation Objectives](#). The CETS is the Maritime Usage Licence period for which the applicant has applied. Using the above 8 step approach, and following a search of relevant databases undertaken on the 15 November 2024 the below projects have been identified as potential in-combination projects:

Company Name	Reference code		Approximate distance from MUL area	Project Status	Potential cumulative effects
Mares Connect	FS007635	Geophysical survey and site investigations for a proposed subsea cable	Ajoins	Foreshore licence granted	Potential disturbance to birds, fish and cetaceans via underwater and above-water noise. Potential spatial and temporal overlap
Microsoft Ireland Operations Ltd	LIC230016	Geophysical survey and site investigations for a proposed cable	Within 5 km	MUL granted	Potential disturbance to birds, fish and cetaceans via underwater and above-water noise. Potential spatial and temporal overlap
Microsoft Ireland Operations Ltd	LIC230018	Geophysical survey and site investigations for a proposed subsea cable	Overlaps	MUL granted	Potential disturbance to birds, fish and cetaceans via underwater and above-water noise. Potential spatial and temporal overlap
Eircom Limited	FS004523	Submarine communications cable	Within 5 km	Foreshore licence granted	Potential disturbance to birds, fish and cetaceans via underwater and above-water noise. Potential spatial and temporal overlap
Gas Networks Ireland	FS003993	Lay, use and maintain of gas pipe line	Within 5 km	Foreshore licence granted	Potential disturbance to birds, fish and cetaceans via underwater and above-water noise. Potential spatial and temporal overlap
Virgin Media	FS005358	Submarine Communication Cable	Within 5 km	Foreshore licence granted	Potential disturbance to birds, fish and cetaceans via underwater and above-water noise. Potential spatial and temporal overlap
Emerald Bridge Fibres Limited	FS006196	Site investigation and installation of submarine cable.	Within 5 km	Foreshore licence granted	Potential disturbance to birds, fish and cetaceans via underwater and above-water noise. Potential spatial and temporal overlap

Rockabill Cable System Limited	FS006842	Submarine Communication Cable	Within 5 km	Foreshore licence granted	Potential disturbance to birds, fish and cetaceans via underwater and above-water noise. Potential spatial and temporal overlap
Celtix Connect Limited	FS006915	Telecommunication subsea fibre optic cable	Within 5 km	Foreshore licence granted	Potential disturbance to birds, fish and cetaceans via underwater and above-water noise. Potential spatial and temporal overlap

The following plans, related to the development of the maritime environment were also identified as relevant:

- The Climate Action Plan 2024
- Water Action Plan
- The National Marine Planning Framework

These plans promote sustainable development in the maritime environment, particularly Ireland's Climate Action Plan's renewable electricity target of 80% of energy generated from renewable electricity sources by 2030.

The potential for likely significant in-combination effects between this project, 11 of the projects listed in Table 4 and the plans listed above on the conservation objectives of Natura 2000 sites considered in this report cannot be excluded at this stage.

Were mitigation measures considered during the screening process?

No

Step 4 Screening Determination Statement

On the basis of the information on file, the assessment contained in this report and having regard to:

- The nature and scale of the proposed development
- The distance to the nearest European sites
- The potential for in-combination effects with other plans and projects
- Possible disturbance from underwater noise
- Possible visual and above water noise disturbance

Having considered the legal framework applicable to Appropriate Assessment, it was concluded that the proposed maritime usage by Mares Connect Limited to carry out marine environmental surveys for the purposes of site investigation in the Irish Sea, off the Dublin coast between the 12 nautical mile limit and the boundary of the EEZ (MUL240008), will require Stage 2 Appropriate Assessment. It cannot be excluded on the basis of objective scientific information following screening that the proposed project, either individually or in combination with other plans or projects, will have a significant effect on a European Site

