



Screening for Appropriate Assessment for a Maritime Usage Licence Application

Licence Reference Number: MUL230024

From Deep Sea Fibre Networks Ltd

FOR marine environmental surveys for the purposes of site investigation or in support of an application under Part XXI of the Act of 2000.

For landfall at Ballyloughane County Galway traversing the Irish Maritime Area to the south west of Ireland.

Document control		
Date	Prepared by	Reviewed by
10/10/24	██████████ Senior Marine Advisor	██████████, Senior Marine Advisor

Step 1 - Description of Project/Proposal and local site characteristics

Brief description of the project

Deep Sea Fibre Networks Ltd has applied to MARA for a maritime usage licence to undertake marine environmental surveys for the purposes of site investigations to inform the feasibility of constructing a new subsea telecoms cable system PISCES which is proposed to link Ireland to EU member states. Specifically, the site investigations will inform the location and design of the cable route and landfall site.

It is proposed that the cable will have landfall at Ballyloughnane Strand in Galway Bay, prior to traversing Galway Bay from a south westerly direction through the Irish maritime area (Figure 1). The survey corridor will be approximately 710km in length covering an area of 3,607km².

The project will be comprised of both geotechnical surveys and geophysical investigations. The surveys will be undertaken in the intertidal zone, an inshore survey (water depths of 3m chart datum to 15m chart datum) and an offshore survey (water depths greater than 15m chart datum).

The landfall site investigations will include bar probes and trial pits, as well as beach walk over surveys for ecological and archaeological purposes. The inshore marine survey will be undertaken using multi-beam echo sounder, side scan sonar, marine magnetometer and sub-bottom profile equipment. The offshore site surveys will include cone penetration tests, grab samples and gravity cores/vibrocores.

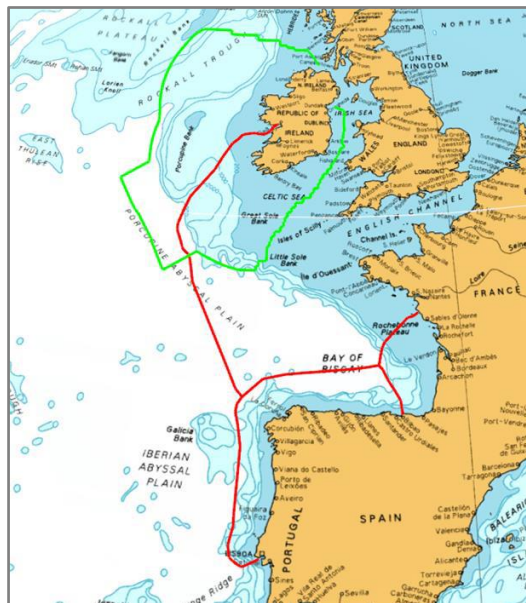


Figure 1: Proposed route for PISCES Telecoms cable system, as per maritime usage licence application.

Brief description of the site characteristics

The area around the proposed landfall site at Ballyloughnane Strand in Co. Galway is a shale, sandy beach. The seabed substrate along the proposed survey corridor consists mainly sand in the intertidal and nearshore areas, Sands and muddy sands are indicated within the survey corridor offshore but the proposed environmental surveys will further determine this information.

Step 2 - Identification of relevant Natura 2000 sites using Source-Pathway-Receptor Model and compilation of information on qualifying interests and conservation objectives.

Table 1: List of Special Areas of Conservation and Special Protection Areas considered in the appropriate assessment screening process.

European Site Code ¹²	Distance from the Proposed MUL area (km)	List of Qualifying Interests	Connections (Source-Pathway Receptors)	Qualifying Interests considered further in Screening Y/N	European Site Screened In for Stage 2 Appropriate Assessment
Galway Bay Complex SAC [Site code IE000268]	Within MUL area	<p>Mudflats and sandflats not covered by seawater at low tide [1140] Perennial vegetation of stony banks [1220] Vegetated sea cliffs of the Atlantic and Baltic coasts [1230] Salicornia and other annuals colonising mud and sand [1310] Atlantic salt meadows (<i>Glaucopuccinellietalia maritimae</i>) [1330] Mediterranean salt meadows (<i>Juncetalia maritimi</i>) [1410] Turloughs [3180] <i>Juniperus communis</i> formations on heaths or calcareous grasslands [5130] Semi-natural dry grasslands and scrubland facies on calcareous substrates (<i>Festuco-Brometalia</i>) (* important orchid sites) [6210] Calcareous fens with <i>Cladium mariscus</i> and species of the <i>Caricion davallianae</i> [7210] Alkaline fens [7230] Limestone pavements [8240] <i>Lutra lutra</i> (Otter) [1355] <i>Phoca vitulina</i> (Harbour Seal) [1365]</p>	Yes – possible foraging areas and habitat	Yes – possible habitat disturbance and underwater noise disturbance	Yes

¹ The Qualifying Interests (QI's) highlighted in **bold text** are screened in for Stage 2 Appropriate Assessment.

² For international Natura sites, only Qualifying Interest species that are screened in for Stage 2 Appropriate Assessment have been listed.

Black Head-Poulsallagh Complex SAC [Site code IE0000020]	15-20km	Reefs [1170] Perennial vegetation of stony banks [1220] Fixed coastal dunes with herbaceous vegetation (grey dunes) [2130] Water courses of plain to montane levels with the <i>Ranunculion fluitantis</i> and <i>Callitricho-Batrachion</i> vegetation [3260] Alpine and Boreal heaths [4060] <i>Juniperus communis</i> formations on heaths or calcareous grasslands [5130] Semi-natural dry grasslands and scrubland facies on calcareous substrates (<i>Festuco-Brometalia</i>) (* important orchid sites) [6210] Lowland hay meadows (<i>Alopecurus pratensis</i> , <i>Sanguisorba officinalis</i>) [6510] Petrifying springs with tufa formation (<i>Cratoneurion</i>) [7220] Limestone pavements [8240] Submerged or partially submerged sea caves [8330] <i>Petalophyllum ralfsii</i> (Petaltwort) [1395]	No	No	No
Inisheer Island SAC [Site code IE0001275]	<10km	Coastal lagoons [1150] Reefs [1170] European dry heaths [4030] Semi-natural dry grasslands and scrubland facies on calcareous substrates (<i>Festuco-Brometalia</i>) (* important orchid sites) [6210] Lowland hay meadows (<i>Alopecurus pratensis</i> , <i>Sanguisorba officinalis</i>) [6510] Limestone pavements [8240]	No	No	No
Inishmaan Island SAC [Site code IE0000212]	10-15km	Reefs [1170] Perennial vegetation of stony banks [1220] Vegetated sea cliffs of the Atlantic and Baltic coasts [1230] Embryonic shifting dunes [2110]	No	No	No

		<p>Shifting dunes along the shoreline with <i>Ammophila arenaria</i> (white dunes) [2120] Machairs (* in Ireland) [21A0] European dry heaths [4030] Semi-natural dry grasslands and scrubland facies on calcareous substrates (<i>Festuco-Brometalia</i>) (* important orchid sites) [6210] Lowland hay meadows (<i>Alopecurus pratensis</i>, <i>Sanguisorba officinalis</i>) [6510] Limestone pavements [8240]</p>			
Inishmore Island SAC [Site code IE0000213]	15-20km	<p>Coastal lagoons [1150] Reefs [1170] Perennial vegetation of stony banks [1220] Vegetated sea cliffs of the Atlantic and Baltic coasts [1230] Embryonic shifting dunes [2110] Shifting dunes along the shoreline with <i>Ammophila arenaria</i> (white dunes) [2120] Fixed coastal dunes with herbaceous vegetation (grey dunes) [2130] Dunes with <i>Salix repens</i> ssp. <i>argentea</i> (<i>Salicion arenariae</i>) [2170] Humid dune slacks [2190] Machairs (* in Ireland) [21A0] European dry heaths [4030] Alpine and Boreal heaths [4060] Semi-natural dry grasslands and scrubland facies on calcareous substrates (<i>Festuco-Brometalia</i>) (* important orchid sites) [6210] Lowland hay meadows (<i>Alopecurus pratensis</i>, <i>Sanguisorba officinalis</i>) [6510] Limestone pavements [8240] Submerged or partially submerged sea caves [8330]</p>	No	No	Yes

		<i>Vertigo angustior</i> (Narrow-mouthed Whorl Snail) [1014]			
		<i>Phocoena phocoena</i> (Harbour Porpoise) [1351]	Yes - possible foraging	Yes – possible disturbance from underwater noise	
Kilkieran Bay and Islands SAC [Site code IE002111]	15-25km	Mudflats and sandflats not covered by seawater at low tide [1140] Coastal lagoons [1150] Large shallow inlets and bays [1160] Reefs [1170] Atlantic salt meadows (<i>Glaucopuccinellietalia maritima</i>) [1330] Mediterranean salt meadows (<i>Juncetalia maritimi</i>) [1410] Machairs (* in Ireland) [21A0] Oligotrophic to mesotrophic standing waters with vegetation of the <i>Littorelletea uniflorae</i> and/or <i>Isoeto-Nanojuncetea</i> [3130] Lowland hay meadows (<i>Alopecurus pratensis</i> , <i>Sanguisorba officinalis</i>) [6510] <i>Lutra lutra</i> (Otter) [1355] <i>Najas flexilis</i> (Slender Naiad) [1833]	No	No	Yes
		<i>Phocoena phocoena</i> (Harbour Porpoise) [1351] <i>Phoca vitulina</i> (Harbour Seal) [1365]	Yes – possible foraging	Yes – possible disturbance from underwater noise	
Lower River Shannon SAC [Site Code IE002165]	15-25km	Sandbanks which are slightly covered by sea water all the time [1110] Mudflats and sandflats not covered by seawater at low tide [1140] Coastal lagoons [1150] Large shallow inlets and bays [1160] Perennial vegetation of stony banks [1220] Vegetated sea cliffs of the Atlantic and Baltic coasts [1230]	No	No source-pathway-receptor link for species or habitats	Yes

		<p>Salicornia and other annuals colonising mud and sand [1310] Atlantic salt meadows (<i>Glaucopuccinellietalia maritimae</i>) [1330] Mediterranean salt meadows (<i>Juncetalia maritimi</i>) [1410] Water courses of plain to montane levels with the <i>Ranunculion fluitantis</i> and <i>Callitriche-Batrachion</i> vegetation [3260] Molinia meadows on calcareous, peaty or clayey-silt-laden soils (<i>Molinion caeruleae</i>) [6410] Alluvial forests with <i>Alnus glutinosa</i> and <i>Fraxinus excelsior</i> (<i>Alno-Padion</i>, <i>Alnion incanae</i>, <i>Salicion albae</i>) [91E0] Estuaries [1130] Reefs [1170] <i>Margaritifera margaritifera</i> (Freshwater Pearl Mussel) [1029] <i>Petromyzon marinus</i> (Sea Lamprey) [1095] <i>Lampetra planeri</i> (Brook Lamprey) [1096] <i>Lampetra fluviatilis</i> (River Lamprey) [1099] <i>Salmo salar</i> (Salmon) [1106] <i>Lutra lutra</i> (Otter) [1355]</p> <p><i>Tursiops truncatus</i> (Common Bottlenose Dolphin) [1349] <i>Phocoena phocoena</i> (Harbour Porpoise) [1351] <i>Halichoerus grypus</i> (Grey Seal) [1364]</p>			
			Yes	Yes – possible disturbance from underwater noise	
Blasket Islands SAC [Site code IE002172]	50-75km	<p>Reefs [1170] Vegetated sea cliffs of the Atlantic and Baltic coasts [1230] European dry heaths [4030] Submerged or partially submerged sea caves [8330]</p>	No	No	No

		<i>Phocoena phocoena</i> (Harbour Porpoise) [1351] <i>Halichoerus grypus</i> (Grey Seal) [1364]	Yes – possible foraging	Yes – possible disturbance from underwater noise	Yes
Slyne Head Islands SAC [Site code IE000328]	50-75km	Reefs [1170]	No	No	Yes
		<i>Tursiops truncatus</i> (Common Bottlenose Dolphin) [1349] <i>Halichoerus grypus</i> (Grey Seal) [1364]	Yes – possible foraging	Yes – possible disturbance from underwater noise	
Slyne Head Peninsula SAC [Site code IE002074]	50-75km	Coastal lagoons [1150] Large shallow inlets and bays [1160] Reefs [1170] Annual vegetation of drift lines [1210] Perennial vegetation of stony banks [1220] Atlantic salt meadows (<i>Glaucopuccinellietalia maritimae</i>) [1330] Mediterranean salt meadows (<i>Juncetalia maritimi</i>) [1410] Embryonic shifting dunes [2110] Shifting dunes along the shoreline with <i>Ammophila arenaria</i> (white dunes) [2120] Machairs (* in Ireland) [21A0] Oligotrophic waters containing very few minerals of sandy plains (<i>Littorelletalia uniflorae</i>) [3110] Oligotrophic to mesotrophic standing waters with vegetation of the <i>Littorelletea uniflorae</i> and/or <i>Isoeto-Nanojuncetea</i> [3130] Hard oligo-mesotrophic waters with benthic vegetation of <i>Chara</i> spp. [3140] European dry heaths [4030] <i>Juniperus communis</i> formations on heaths or calcareous grasslands [5130] Semi-natural dry grasslands and scrubland facies on calcareous substrates (<i>Festuco-Brometalia</i>) (* important orchid sites) [6210]	No	No	Yes

		<p>Molinia meadows on calcareous, peaty or clayey-silt-laden soils (<i>Molinion caeruleae</i>) [6410] Lowland hay meadows (<i>Alopecurus pratensis</i>, <i>Sanguisorba officinalis</i>) [6510] Alkaline fens [7230] <i>Petalophyllum ralfsii</i> (Petalwort) [1395] <i>Najas flexilis</i> (Slender Naiad) [1833]</p>			
		<i>Tursiops truncatus</i> (Common Bottlenose Dolphin) [1349]	Yes – possible foraging	Yes – possible disturbance from underwater noise	
West Connacht Coast SAC [Site code IE002998]	50-75km	<i>Tursiops truncatus</i> (Common Bottlenose Dolphin) [1349] <i>Phocoena phocoena</i> (Harbour Porpoise) [1351]	Yes – possible foraging	Yes – possible disturbance from underwater noise	Yes
Clew Bay Complex SAC [Site code IE001482]	50-75km	Mudflats and sandflats not covered by seawater at low tide [1140] Coastal lagoons [1150] Large shallow inlets and bays [1160] Annual vegetation of drift lines [1210] Perennial vegetation of stony banks [1220] Atlantic salt meadows (<i>Glaucopuccinellietalia maritimae</i>) [1330] Embryonic shifting dunes [2110] Shifting dunes along the shoreline with <i>Ammophila arenaria</i> (white dunes) [2120] Machairs (* in Ireland) [21A0] Old sessile oak woods with Ilex and Blechnum in the British Isles [91A0] <i>Lutra lutra</i> (Otter) [1355]	No	No	Yes
		<i>Phoca vitulina</i> (Harbour Seal) [1365]	Yes – possible foraging	Yes – possible disturbance from underwater noise	

Killala Bay/Moy Estuary SAC [Site code IE0000458]	75-100km	Estuaries [1130] Mudflats and sandflats not covered by seawater at low tide [1140] Annual vegetation of drift lines [1210] Vegetated sea cliffs of the Atlantic and Baltic coasts [1230] Salicornia and other annuals colonising mud and sand [1310] Atlantic salt meadows (<i>Glauco-Puccinellietalia maritima</i>) [1330] Embryonic shifting dunes [2110] Shifting dunes along the shoreline with <i>Ammophila arenaria</i> (white dunes) [2120] Fixed coastal dunes with herbaceous vegetation (grey dunes) [2130] Humid dune slacks [2190] <i>Vertigo angustior</i> (Narrow-mouthed Whorl Snail) [1014] <i>Petromyzon marinus</i> (Sea Lamprey) [1095]	No	No	Yes
		<i>Phoca vitulina</i> (Harbour Seal) [1365]	Yes – possible foraging	Yes – possible disturbance from underwater noise	
Inishbofin and Inishshark SAC [Site code IE000278]	75-100km	Coastal lagoons [1150] Oligotrophic waters containing very few minerals of sandy plains (<i>Littorelletalia uniflorae</i>) [3110] Northern Atlantic wet heaths with <i>Erica tetralix</i> [4010] European dry heaths [4030]	No	No	Yes
		<i>Halichoerus grypus</i> (Grey Seal) [1364]	Yes – possible foraging	Yes – possible disturbance from underwater noise	
Duvillaun Islands SAC [Site code IE000495]	>100km	<i>Tursiops truncatus</i> (Common Bottlenose Dolphin) [1349] <i>Halichoerus grypus</i> (Grey Seal) [1364]	Yes – possible foraging	Yes – possible disturbance from underwater noise	Yes

Inishkea Islands SAC [Site code IE000507]	>100km	Machairs (* in Ireland) [21A0] <i>Petalophyllum ralfsii</i> (Petalwort) [1395]	No	No	Yes
		<i>Halichoerus grypus</i> (Grey Seal) [1364]	Yes - possible foraging	Yes – possible disturbance from underwater noise	
Ballysadare Bay SAC [Site code IE000622]	>100km	Estuaries [1130] Mudflats and sandflats not covered by seawater at low tide [1140] Embryonic shifting dunes [2110] Shifting dunes along the shoreline with <i>Ammophila arenaria</i> (white dunes) [2120] Fixed coastal dunes with herbaceous vegetation (grey dunes) [2130] Humid dune slacks [2190] <i>Vertigo angustior</i> (Narrow-mouthed Whorl Snail) [1014]	No	No	Yes
		<i>Phoca vitulina</i> (Harbour Seal) [1365]	Yes - possible foraging	Yes – possible disturbance from underwater noise	
Cummeen Strand/Drumcliffe Bay (Sligo Bay) SAC [Site code IE000627]	>100km	Estuaries [1130] Mudflats and sandflats not covered by seawater at low tide [1140] Embryonic shifting dunes [2110] Shifting dunes along the shoreline with <i>Ammophila arenaria</i> (white dunes) [2120] Fixed coastal dunes with herbaceous vegetation (grey dunes) [2130] <i>Juniperus communis</i> formations on heaths or calcareous grasslands [5130] Semi-natural dry grasslands and scrubland facies on calcareous substrates (<i>Festuco-Brometalia</i>) (* important orchid sites) [6210] Petrifying springs with tufa formation (<i>Cratoneurion</i>) [7220]	No	No	Yes

		<i>Vertigo angustior</i> (Narrow-mouthed Whorl Snail) [1014] <i>Petromyzon marinus</i> (Sea Lamprey) [1095] <i>Lampetra fluviatilis</i> (River Lamprey) [1099]			
		<i>Phoca vitulina</i> (Harbour Seal) [1365]	Yes - possible foraging	Yes – possible disturbance from underwater noise	
Glengarriff Harbour and Woodland SAC [Site code IE000090]	>100km	Old sessile oak woods with Ilex and Blechnum in the British Isles [91A0] Alluvial forests with <i>Alnus glutinosa</i> and <i>Fraxinus excelsior</i> (<i>Alno-Padion</i> , <i>Alnion incanae</i> , <i>Salicion albae</i>) [91E0] <i>Geomalacus maculosus</i> (Kerry Slug) [1024] <i>Rhinolophus hipposideros</i> (Lesser Horseshoe Bat) [1303] <i>Lutra lutra</i> (Otter) [1355]	No	No	Yes
		<i>Phoca vitulina</i> (Harbour Seal) [1365]	Yes - possible foraging	Yes – possible disturbance from underwater noise	
Roaringwater Bay and Islands SAC [Site code IE000101]	>100km	Large shallow inlets and bays [1160] Reefs [1170] Vegetated sea cliffs of the Atlantic and Baltic coasts [1230] European dry heaths [4030] Submerged or partially submerged sea caves [8330] <i>Lutra lutra</i> (Otter) [1355]	No	No	Yes
		<i>Halichoerus grypus</i> (Grey Seal) [1364] <i>Phocoena phocoena</i> (Harbour Porpoise) [1351]	Yes – possible foraging	Yes – possible disturbance from underwater noise	
Rockabill to Dalkey SAC [IE003000]	>200km	Reefs [1170]	No	No	Yes

		<i>Phocoena phocoena</i> (Harbour Porpoise) [1351]	Yes – possible foraging	Yes – possible disturbance from underwater noise	
Kenmare River SAC [IE002158]	>100km	Large shallow inlets and bays [1160] Reefs [1170] Perennial vegetation of stony banks [1220] Vegetated sea cliffs of the Atlantic and Baltic coasts [1230] Atlantic salt meadows (<i>Glaucopuccinellietalia maritima</i>) [1330] Mediterranean salt meadows (<i>Juncetalia maritimi</i>) [1410] Shifting dunes along the shoreline with <i>Ammophila arenaria</i> (white dunes) [2120] Fixed coastal dunes with herbaceous vegetation (grey dunes) [2130] European dry heaths [4030] <i>Juniperus communis</i> formations on heaths or calcareous grasslands [5130] Calaminarian grasslands of the <i>Violetalia calaminariae</i> [6130] Submerged or partially submerged sea caves [8330] <i>Vertigo angustior</i> (Narrow-mouthed Whorl Snail) [1014] <i>Rhinolophus hipposideros</i> (Lesser Horseshoe Bat) [1303] <i>Lutra lutra</i> (Otter) [1355]	No	No	Yes
		<i>Phoca vitulina</i> (Harbour Seal) [1365] <i>Phocoena phocoena</i> (Harbour Porpoise) [1351]	Yes – possible foraging	Yes – possible disturbance from underwater noise	
Donegal Bay (Murvagh) SAC [Site code IE0000133]	>100km	Mudflats and sandflats not covered by seawater at low tide [1140] Fixed coastal dunes with herbaceous vegetation (grey dunes) [2130]	No	No	Yes

		Dunes with <i>Salix repens</i> ssp. <i>argentea</i> (<i>Salicion arenariae</i>) [2170] Humid dune slacks [2190]			
		<i>Phoca vitulina</i> (Harbour Seal) [1365]	Yes – possible foraging	Yes – possible disturbance from underwater noise	
Slaney River Valley SAC [Site code IE0000781]	>100km	Estuaries [1130] Mudflats and sandflats not covered by seawater at low tide [1140] Atlantic salt meadows (<i>Glaucopuccinellietalia maritimae</i>) [1330] Mediterranean salt meadows (<i>Juncetalia maritimi</i>) [1410] Water courses of plain to montane levels with the <i>Ranunculion fluitantis</i> and <i>Callitriche-Batrachion</i> vegetation [3260] Old sessile oak woods with Ilex and Blechnum in the British Isles [91A0] Alluvial forests with <i>Alnus glutinosa</i> and <i>Fraxinus excelsior</i> (<i>Alno-Padion</i> , <i>Alnion incanae</i> , <i>Salicion albae</i>) [91E0] <i>Margaritifera margaritifera</i> (Freshwater Pearl Mussel) [1029] <i>Petromyzon marinus</i> (Sea Lamprey) [1095] <i>Lampetra planeri</i> (Brook Lamprey) [1096] <i>Lampetra fluviatilis</i> (River Lamprey) [1099] <i>Alosa fallax fallax</i> (Twaiite Shad) [1103] <i>Salmo salar</i> (Salmon) [1106] <i>Lutra lutra</i> (Otter) [1355]	No	No	Yes
		<i>Phoca vitulina</i> (Harbour Seal) [1365]	Yes – possible foraging	Yes – possible disturbance from underwater noise	

Slieve Tooley/Tormore Island/Loughbro Beg Bay SAC [Site code IE000190]	>100km	<p>Vegetated sea cliffs of the Atlantic and Baltic coasts [1230] Atlantic salt meadows (<i>Glaucopuccinellietalia maritimae</i>) [1330] Mediterranean salt meadows (<i>Juncetalia maritimi</i>) [1410] Embryonic shifting dunes [2110] Shifting dunes along the shoreline with <i>Ammophila arenaria</i> (white dunes) [2120] Fixed coastal dunes with herbaceous vegetation (grey dunes) [2130] Decalcified fixed dunes with <i>Empetrum nigrum</i> [2140] Atlantic decalcified fixed dunes (<i>Callunoulicetea</i>) [2150] Dunes with <i>Salix repens ssp. argentea</i> (<i>Salicion arenariae</i>) [2170] Humid dune slacks [2190] Alpine and Boreal heaths [4060] Blanket bogs (* if active bog) [7130] <i>Vertigo angustior</i> (Narrow-mouthed Whorl Snail) [1014] <i>Lutra lutra</i> (Otter) [1355]</p>	No	No	Yes
		<i>Halichoerus grypus</i> (Grey Seal) [1364]	Yes – possible foraging	Yes – possible disturbance from underwater noise	
West of Ardara/Maas Road SAC [Site code: IE000197]	>100km	<p>Estuaries [1130] Mudflats and sandflats not covered by seawater at low tide [1140] Large shallow inlets and bays [1160] Annual vegetation of drift lines [1210] Atlantic salt meadows (<i>Glaucopuccinellietalia maritimae</i>) [1330] Mediterranean salt meadows (<i>Juncetalia maritimi</i>) [1410] Embryonic shifting dunes [2110] Shifting dunes along the shoreline with <i>Ammophila arenaria</i> (white dunes) [2120] Fixed coastal dunes with herbaceous vegetation (grey dunes) [2130]</p>	No	No	Yes

		<p>Decalcified fixed dunes with <i>Empetrum nigrum</i> [2140] Atlantic decalcified fixed dunes (<i>Calluno-Ulicetea</i>) [2150] Dunes with <i>Salix repens ssp. argentea</i> (<i>Salicion arenariae</i>) [2170] Humid dune slacks [2190] Machairs (* in Ireland) [21A0] Oligotrophic waters containing very few minerals of sandy plains (<i>Littorelletalia uniflorae</i>) [3110] Oligotrophic to mesotrophic standing waters with vegetation of the <i>Littorelletea uniflorae</i> and/or <i>Isoeto-Nanojuncetea</i> [3130] Northern Atlantic wet heaths with <i>Erica tetralix</i> [4010] European dry heaths [4030] Alpine and Boreal heaths [4060] <i>Juniperus communis</i> formations on heaths or calcareous grasslands [5130] Semi-natural dry grasslands and scrubland facies on calcareous substrates (<i>Festuco-Brometalia</i>) (* important orchid sites) [6210] Molinia meadows on calcareous, peaty or clayey-silt-laden soils (<i>Molinion caeruleae</i>) [6410] Lowland hay meadows (<i>Alopecurus pratensis</i>, <i>Sanguisorba officinalis</i>) [6510] Blanket bogs (* if active bog) [7130] Depressions on peat substrates of the <i>Rhynchosporion</i> [7150] Alkaline fens [7230] <i>Vertigo geyeri</i> (Geyer's Whorl Snail) [1013] <i>Margaritifera margaritifera</i> (Freshwater Pearl Mussel) [1029] <i>Euphydryas aurinia</i> (Marsh Fritillary) [1065] <i>Salmo salar</i> (Salmon) [1106] <i>Lutra lutra</i> (Otter) [1355] <i>Petalophyllum ralfsii</i> (Petalwort) [1395] <i>Najas flexilis</i> (Slender Naiad) [1833]</p>			
		<i>Phoca vitulina</i> (Harbour Seal) [1365]	Yes – foraging possible	Yes – possible disturbance from underwater noise	
Rutland Island and Sound SAC [Site code: IE002283]	>100km	Coastal lagoons [1150] Large shallow inlets and bays [1160] Reefs [1170] Annual vegetation of drift lines [1210] Embryonic shifting dunes [2110]	No	No	Yes

		Shifting dunes along the shoreline with <i>Ammophila arenaria</i> (white dunes) [2120] Fixed coastal dunes with herbaceous vegetation (grey dunes) [2130] Humid dune slacks [2190]			
		<i>Phoca vitulina</i> (Harbour Seal) [1365]	Yes – foraging possible	Yes – possible disturbance from underwater noise	
Belgica Mound Province SAC [Site code: IE002327]	25-50km	Reefs [1170]	No	No	Yes
		<i>Phocoena phocoena</i> (Harbour Porpoise) [1351] <i>Tursiops truncatus</i> (Common Bottlenose Dolphin) [1349]	Yes – foraging possible	Yes – possible disturbance from underwater noise	
Bunduff Lough and Machair/Trawalua/Mullaghmore SAC [000625]	>200km	Mudflats and sandflats not covered by seawater at low tide [1140] Large shallow inlets and bays [1160] Reefs [1170] Shifting dunes along the shoreline with <i>Ammophila arenaria</i> (white dunes) [2120] Fixed coastal dunes with herbaceous vegetation (grey dunes) [2130] Humid dune slacks [2190] Machairs (* in Ireland) [21A0] <i>Juniperus communis</i> formations on heaths or calcareous grasslands [5130] Semi-natural dry grasslands and scrubland facies on calcareous substrates (<i>Festuco-Brometalia</i>) (* important orchid sites) [6210] Alkaline fens [7230] <i>Euphydryas aurinia</i> (Marsh Fritillary) [1065] <i>Petalophyllum ralfsii</i> (Petawort) [1395]	No	No	Yes

		<i>Phocoena phocoena</i> (Harbour Porpoise) [1351]	Yes – foraging possible	Yes – possible disturbance from underwater noise	
St Johns Point SAC [IE000191]	>200km	Large shallow inlets and bays [1160] Reefs [1170] Vegetated sea cliffs of the Atlantic and Baltic coasts [1230] Semi-natural dry grasslands and scrubland facies on calcareous substrates (<i>Festuco-Brometalia</i>) (* important orchid sites) [6210] Molinia meadows on calcareous, peaty or clayey-silt-laden soils (<i>Molinion caeruleae</i>) [6410] Alkaline fens [7230] Limestone pavements [8240] Submerged or partially submerged sea caves [8330] <i>Euphydryas aurinia</i> (Marsh Fritillary) [1065]	No	No	Yes
		<i>Tursiops truncatus</i> (Common Bottlenose Dolphin) [1349]	Yes – foraging possible	Yes – possible disturbance from underwater noise	
Hook Head SAC [IE000764]	>200km	Large shallow inlets and bays [1160] Reefs [1170] Vegetated sea cliffs of the Atlantic and Baltic coasts [1230]	No	No	Yes
		<i>Tursiops truncatus</i> (Common Bottlenose Dolphin) [1349] <i>Phocoena phocoena</i> (Harbour Porpoise) [1351]	Yes – foraging possible	Yes – possible disturbance from underwater noise	
Carnsore Point SAC [Site code: IE002629]	>200km	Mudflats and sandflats not covered by seawater at low tide [1140] Reefs [1170]	No	No	Yes
		<i>Phocoena phocoena</i> (Harbour Porpoise) [1351]	Yes – foraging possible	Yes – possible disturbance from underwater noise	

Saltee Islands SAC [Site code: IE000707]	>200km	Mudflats and sandflats not covered by seawater at low tide [1140] Large shallow inlets and bays [1160] Reefs [1170] Vegetated sea cliffs of the Atlantic and Baltic coasts [1230] Submerged or partially submerged sea caves [8330]	No	No	Yes
		<i>Halichoerus grypus (Grey Seal) [1364]</i>	Yes – foraging possible	Yes – possible disturbance from underwater noise	
Blackwater Bank SAC [Site code: IE002953]	>200km	Sandbanks which are slightly covered by sea water all the time [1110]	No	No	Yes
		<i>Phocoena phocoena (Harbour Porpoise) [1351]</i>	Yes – foraging possible	Yes – possible disturbance from underwater noise	
Porcupine Bank Canyon SAC [Site code: IE003001]	>100km	Reefs [1170]	No	No	Yes
		<i>Tursiops truncatus (Common Bottlenose Dolphin) [1349]</i>	Yes – foraging possible	Yes – possible disturbance from underwater noise	
South-west Porcupine Bank SAC [Site code: IE002329]	>100km	Reefs [1170]	No	No	Yes
		<i>Tursiops truncatus (Common Bottlenose Dolphin) [1349]</i>	Yes – foraging possible	Yes – possible disturbance from underwater noise	
Hovland Mound Province SAC [Site code: IE002328]	25-50km	Reefs [1170]	No	No	No
Southern Canyons SAC [Site code: IE002278]	<100km	Reefs [1170]	No	No	No
Codling Fault Zone SAC [Site code: IE003015]	>200km	Submarine structures made by leaking gases [1180]	No	No	Yes
		<i>Phocoena phocoena (Harbour Porpoise) [1351]</i>	Yes – foraging possible	Yes – possible disturbance from underwater noise	

Lambay Island SAC [Site code: IE000204]	>200km	Reefs [1170] Vegetated sea cliffs of the Atlantic and Baltic coasts [1230] <i>Halichoerus grypus</i> (Grey Seal) [1364] <i>Phoca vitulina</i> (Harbour Seal) [1365]	No	No	Yes
		<i>Phocoena phocoena</i> (Harbour Porpoise) [1351]	Yes – foraging possible	Yes – possible disturbance from underwater noise	
Horn Head and Rinclevan SAC [Site code: IE000147]	>200km	Embryonic shifting dunes [2110] Shifting dunes along the shoreline with <i>Ammophila arenaria</i> (white dunes) [2120] Fixed coastal dunes with herbaceous vegetation (grey dunes) [2130] Dunes with <i>Salix repens ssp. argentea</i> (<i>Salicion arenariae</i>) [2170] Humid dune slacks [2190] Machairs (* in Ireland) [21A0] Oligotrophic to mesotrophic standing waters with vegetation of the <i>Littorelletea uniflorae</i> and/or <i>Isoeto-Nanojuncetea</i> [3130] <i>Vertigo geyeri</i> (Geyer's Whorl Snail) [1013] <i>Petalophyllum ralfsii</i> (Petalwort) [1395] <i>Najas flexilis</i> (Slender Naiad) [1833]	No	No	Yes
		<i>Halichoerus grypus</i> (Grey Seal) [1364]	Yes – foraging possible	Yes – possible disturbance from underwater noise	
North Anglesey Marine / Gogledd Môn Forol [UK 0030398]	Within Management Unit for Harbour porpoise ³	<i>Phocoena phocoena</i> (Harbour Porpoise) [1351]	Yes – foraging possible	Yes – possible disturbance from underwater noise	Yes

³ [Review of Management Unit boundaries for cetaceans in UK waters \(2023\)](#)

Bristol Channel Approaches / Dynesfeydd Môr Hafren [UK0030396]	Within Management Unit for Harbour porpoise	<i>Phocoena phocoena</i> (Harbour Porpoise) [1351]	Yes – foraging possible	Yes – possible disturbance from underwater noise	Yes
North Channel [UK 0030399]	Within Management Unit for Harbour porpoise	<i>Phocoena phocoena</i> (Harbour Porpoise) [1351]	Yes – foraging possible	Yes – possible disturbance from underwater noise	Yes
West Wales Marine / Gorllewin Cymru Forol [UK 0030397]	Within Management Unit for Harbour porpoise	<i>Phocoena phocoena</i> (Harbour Porpoise) [1351]	Yes – foraging possible	Yes – possible disturbance from underwater noise	Yes
Récifs et landes de la Hague [FR2500084]	Within Management Unit for Harbour porpoise	<i>Phocoena phocoena</i> (Harbour Porpoise) [1351]	Yes – foraging possible	Yes – possible disturbance from underwater noise	Yes
Anse de Vauville [FR2502019]	Within Management Unit for Harbour porpoise	<i>Phocoena phocoena</i> (Harbour Porpoise) [1351]	Yes – foraging possible	Yes – possible disturbance from underwater noise	Yes
Banc et récifs de Surtainville [FR2502018]	Within Management Unit for Harbour porpoise	<i>Phocoena phocoena</i> (Harbour Porpoise) [1351]	Yes – foraging possible	Yes – possible disturbance from underwater noise	Yes
Chausey [FR2500079]	Within Management Unit for Harbour porpoise	<i>Phocoena phocoena</i> (Harbour Porpoise) [1351]	Yes – foraging possible	Yes – possible disturbance from underwater noise	Yes
Baie du Mont Saint-Michel [FR2500077]	Within Management Unit for Harbour porpoise	<i>Phocoena phocoena</i> (Harbour Porpoise) [1351]	Yes – foraging possible	Yes – possible disturbance from underwater noise	Yes

Estuaire de la Rance [FR5300061]	Within Management Unit for Harbour porpoise	<i>Phocoena phocoena</i> (Harbour Porpoise) [1351]	Yes – foraging possible	Yes – possible disturbance from underwater noise	Yes
Baie de Lancieux, Baie de l'Arguenon, Archipel de Saint Malo et Dinard [FR5300012]	Within Management Unit for Harbour porpoise	<i>Phocoena phocoena</i> (Harbour Porpoise) [1351]	Yes – foraging possible	Yes – possible disturbance from underwater noise	Yes
Cap d'Erquy-Cap Fréhel [FR5300011]	Within Management Unit for Harbour porpoise	<i>Phocoena phocoena</i> (Harbour Porpoise) [1351]	Yes – foraging possible	Yes – possible disturbance from underwater noise	Yes
Baie de Saint-Brieuc – Est [FR5300066]	Within Management Unit for Harbour porpoise	<i>Phocoena phocoena</i> (Harbour Porpoise) [1351]	Yes – foraging possible	Yes – possible disturbance from underwater noise	Yes
Tregor Goëlo Est [FR5300010]	Within Management Unit for Harbour porpoise	<i>Phocoena phocoena</i> (Harbour Porpoise) [1351]	Yes – foraging possible	Yes – possible disturbance from underwater noise	Yes
Côte de Granit rose-Sept-Iles [FR5300009]	Within Management Unit for Harbour porpoise	<i>Phocoena phocoena</i> (Harbour Porpoise) [1351]	Yes – foraging possible	Yes – possible disturbance from underwater noise	Yes
Nord Bretagne DH [FR2502022]	Within Management Unit for Harbour porpoise	<i>Phocoena phocoena</i> (Harbour Porpoise) [1351]	Yes – foraging possible	Yes – possible disturbance from underwater noise	Yes
Baie de Morlaix [FR5300015]	Within Management Unit for Harbour porpoise	<i>Phocoena phocoena</i> (Harbour Porpoise) [1351]	Yes – foraging possible	Yes – possible disturbance from underwater noise	Yes

Abers - Côte des legends [FR5300017]	Within Management Unit for Harbour porpoise	<i>Phocoena phocoena</i> (Harbour Porpoise) [1351]	Yes – foraging possible	Yes – possible disturbance from underwater noise	Yes
Ouessant-Molène [FR5300018]	Within Management Unit for Harbour porpoise	<i>Phocoena phocoena</i> (Harbour Porpoise) [1351]	Yes – foraging possible	Yes – possible disturbance from underwater noise	Yes
Côtes de Crozon [FR5302006]	Within Management Unit for Harbour porpoise	<i>Phocoena phocoena</i> (Harbour Porpoise) [1351]	Yes – foraging possible	Yes – possible disturbance from underwater noise	Yes
Inner Galway Bay SPA [Site code: IE0004031]	Within MUL area	Black-throated Diver (<i>Gavia arctica</i>) [A002] Great Northern Diver (<i>Gavia immer</i>) [A003] Cormorant (<i>Phalacrocorax carbo</i>) [A017] Grey Heron (<i>Ardea cinerea</i>) [A028] Light-bellied Brent Goose (<i>Branta bernicla hrota</i>) [A046] Wigeon (<i>Anas penelope</i>) [A050] Teal (<i>Anas crecca</i>) [A052] Red-breasted Merganser (<i>Mergus serrator</i>) [A069] Ringed Plover (<i>Charadrius hiaticula</i>) [A137] Golden Plover (<i>Pluvialis apricaria</i>) [A140] Lapwing (<i>Vanellus vanellus</i>) [A142] Dunlin (<i>Calidris alpina</i>) [A149] Bar-tailed Godwit (<i>Limosa lapponica</i>) [A157] Curlew (<i>Numenius arquata</i>) [A160] Redshank (<i>Tringa totanus</i>) [A162] Turnstone (<i>Arenaria interpres</i>) [A169] Black-headed Gull (<i>Chroicocephalus ridibundus</i>) [A179] Common Gull (<i>Larus canus</i>) [A182] Sandwich Tern (<i>Sterna sandvicensis</i>) [A191] Common Tern (<i>Sterna hirundo</i>) [A193]	Yes – possible foraging	Yes – possible disturbance from underwater noise or habitat disturbance	Yes

		Wetland and Waterbirds [A999]			
Inishmore SPA [Site code: 0004152]	15-20km	Kittiwake (<i>Rissa tridactyla</i>) [A188] Arctic Tern (<i>Sterna paradisaea</i>) [A194] Little Tern (<i>Sterna albifrons</i>) [A195] Guillemot (<i>Uria aalge</i>) [A199]	Yes – possible foraging	Yes – possible disturbance from underwater noise	Yes
Cliffs of Moher SPA [Site code: 0004005]	10-15km	Chough (<i>Pyrhocorax pyrrhocorax</i>) [A346]	No	No	Yes
		Fulmar (<i>Fulmarus glacialis</i>) [A009] Kittiwake (<i>Rissa tridactyla</i>) [A188] Guillemot (<i>Uria aalge</i>) [A199] Razorbill (<i>Alca torda</i>) [A200] Puffin (<i>Fratercula arctica</i>) [A204]	Yes – possible foraging	Yes – possible disturbance from underwater noise	
Mid Clare Coast SPA [Site code: IE0004182]	10-15km	Barnacle Goose (<i>Branta leucopsis</i>) [A045] Ringed Plover (<i>Charadrius hiaticula</i>) [A137] Sanderling (<i>Calidris alba</i>) [A144] Purple Sandpiper (<i>Calidris maritima</i>) [A148] Dunlin (<i>Calidris alpina</i>) [A149] Turnstone (<i>Arenaria interpres</i>) [A169] Cormorant (<i>Phalacrocorax carbo</i>) [A017] Wetland and Waterbirds [A999]	No	No	No
Illanonearaun SPA [Site code: IE0004114]	20-25km	Barnacle Goose (<i>Branta leucopsis</i>) [A045]	No	No	No
Loop Head SPA [Site code: IE0004119]	20-25km	Kittiwake (<i>Rissa tridactyla</i>) [A188] Guillemot (<i>Uria aalge</i>) [A199]	Yes – possible foraging	Yes – possible disturbance from underwater noise	Yes
Kerry Head SPA [Site code: IE004189]	50-75km	Chough (<i>Pyrhocorax pyrrhocorax</i>) [A346]	No	No	Yes
		Fulmar (<i>Fulmarus glacialis</i>) [A009]	Yes – possible foraging	Yes – possible disturbance from underwater noise	

Dingle Peninsula SPA [Site code: IE004153]	75-100km	Peregrine (<i>Falco peregrinus</i>) [A103] Chough (<i>Pyrrhocorax pyrrhocorax</i>) [A346]	No	No	Yes
		Fulmar (<i>Fulmarus glacialis</i>) [A009]	Yes – possible foraging	Yes – possible disturbance from underwater noise	
Blasket Islands SPA [Site code: IE004008]	75-100km	Storm Petrel (<i>Hydrobates pelagicus</i>) [A014] Shag (<i>Phalacrocorax aristotelis</i>) [A018] Lesser Black-backed Gull (<i>Larus fuscus</i>) [A183] Herring Gull (<i>Larus argentatus</i>) [A184] Kittiwake (<i>Rissa tridactyla</i>) [A188] Arctic Tern (<i>Sterna paradisaea</i>) [A194] Razorbill (<i>Alca torda</i>) [A200] Puffin (<i>Fratercula arctica</i>) [A204] Chough (<i>Pyrrhocorax pyrrhocorax</i>) [A346]	No	No	Yes
		Fulmar (<i>Fulmarus glacialis</i>) [A009] Manx Shearwater (<i>Puffinus puffinus</i>) [A013]	Yes – possible foraging	Yes – possible disturbance from underwater noise	
River Shannon and River Fergus Estuaries SPA [Site code IE004077]	25-50km	Cormorant (<i>Phalacrocorax carbo</i>) [A017] Whooper Swan (<i>Cygnus cygnus</i>) [A038] Light-bellied Brent Goose (<i>Branta bernicla hrota</i>) [A046] Shelduck (<i>Tadorna tadorna</i>) [A048] Wigeon (<i>Anas penelope</i>) [A050] Teal (<i>Anas crecca</i>) [A052] Pintail (<i>Anas acuta</i>) [A054] Shoveler (<i>Anas clypeata</i>) [A056] Scaup (<i>Aythya marila</i>) [A062] Ringed Plover (<i>Charadrius hiaticula</i>) [A137] Golden Plover (<i>Pluvialis apricaria</i>) [A140] Grey Plover (<i>Pluvialis squatarola</i>) [A141] Lapwing (<i>Vanellus vanellus</i>) [A142] Knot (<i>Calidris canutus</i>) [A143] Dunlin (<i>Calidris alpina</i>) [A149] Black-tailed Godwit (<i>Limosa limosa</i>) [A156] Bar-tailed Godwit (<i>Limosa lapponica</i>) [A157] Curlew (<i>Numenius arquata</i>) [A160]	No	No	No

		Redshank (<i>Tringa totanus</i>) [A162] Greenshank (<i>Tringa nebularia</i>) [A164] Black-headed Gull (<i>Chroicocephalus ridibundus</i>) [A179] Wetland and Waterbirds [A999]			
Iveragh Peninsula SPA [Site code: IE004154]	>100km	Peregrine (<i>Falco peregrinus</i>) [A103] Kittiwake (<i>Rissa tridactyla</i>) [A188] Guillemot (<i>Uria aalge</i>) [A199] Chough (<i>Pyrrhocorax pyrrhocorax</i>) [A346]	No	No	Yes
		Fulmar (<i>Fulmarus glacialis</i>) [A009]	Yes – possible foraging	Yes – possible disturbance from underwater noise	
Skelligs SPA [Site code: IE004007]	>100km	Storm Petrel (<i>Hydrobates pelagicus</i>) [A014] Gannet (<i>Morus bassanus</i>) [A016] Kittiwake (<i>Rissa tridactyla</i>) [A188] Guillemot (<i>Uria aalge</i>) [A199] Puffin (<i>Fratercula arctica</i>) [A204]	No	No	Yes
		Fulmar (<i>Fulmarus glacialis</i>) [A009] Manx Shearwater (<i>Puffinus puffinus</i>) [A013]	Yes – possible foraging	Yes – possible disturbance from underwater noise	
Deenish Island and Scariff Island SPA [Site code: IE004175]	>100km	Storm Petrel (<i>Hydrobates pelagicus</i>) [A014] Lesser Black-backed Gull (<i>Larus fuscus</i>) [A183] Arctic Tern (<i>Sterna paradisaea</i>) [A194]	No	No	Yes
		Fulmar (<i>Fulmarus glacialis</i>) [A009] Manx Shearwater (<i>Puffinus puffinus</i>) [A013]	Yes – possible foraging	Yes – possible disturbance from underwater noise	
Beara Peninsula SPA [Site code: IE004155]	>100km	Chough (<i>Pyrrhocorax pyrrhocorax</i>) [A346]	No	No	Yes
		Fulmar (<i>Fulmarus glacialis</i>) [A009]	Yes – possible foraging	Yes – possible disturbance from underwater noise	
Slyne Head to Ardmore Point Islands SPA [Site code: IE004159]	25-50km	Barnacle Goose (<i>Branta leucopsis</i>) [A045]	No	No	No

		Sandwich Tern (<i>Sterna sandvicensis</i>) [A191] Arctic Tern (<i>Sterna paradisaea</i>) [A194] Little Tern (<i>Sterna albifrons</i>) [A195]			
Cruagh Island SPA [Site code: IE004170]	75-100km	Barnacle Goose (<i>Branta leucopsis</i>) [A045]	No	No	Yes
		Manx Shearwater (<i>Puffinus puffinus</i>) [A013]	Yes – possible foraging	Yes – possible disturbance from underwater noise	
High Island, Inishark and Davillaun SPA [Site code: IE004144]	75-100km	Barnacle Goose (<i>Branta leucopsis</i>) [A045] Arctic Tern (<i>Sterna paradisaea</i>) [A194]	No	No	Yes
		Fulmar (<i>Fulmarus glacialis</i>) [A009]	Yes – possible foraging	Yes – possible disturbance from underwater noise	
Clare Island SPA [Site code: IE004136]	>100km	Fulmar (<i>Fulmarus glacialis</i>) [A009] Shag (<i>Phalacrocorax aristotelis</i>) [A018] Common Gull (<i>Larus canus</i>) [A182] Kittiwake (<i>Rissa tridactyla</i>) [A188] Guillemot (<i>Uria aalge</i>) [A199] Razorbill (<i>Alca torda</i>) [A200] Chough (<i>Pyrrhocorax pyrrhocorax</i>) [A346]	No	No	Yes
		Fulmar (<i>Fulmarus glacialis</i>) [A009]	Yes – possible foraging	Yes – possible disturbance from underwater noise	
Duvillaun Islands SPA [Site code: IE004111]	>100km	Storm Petrel (<i>Hydrobates pelagicus</i>) [A014] Barnacle Goose (<i>Branta leucopsis</i>) [A045]	No	No	Yes
		Fulmar (<i>Fulmarus glacialis</i>) [A009]	Yes – possible foraging	Yes – possible disturbance from underwater noise	

Step 3 Assessment of likely significant effects

- (a) Identify all potential direct and indirect impacts that may have an effect on the conservation objectives of a European site, taking into account the size and scale of the project

Potential Impacts	Possible significance of Potential impacts (duration, magnitude, etc.)
Disturbance from underwater noise	Possible temporal impacts on marine mammals and birds.
Visual and above water noise disturbance.	Possible temporal impacts on birds.
Physical disturbance and habitat loss	The works will be temporary in nature and will not result in permanent habitat loss.

In-combination effects

MARA has developed a stepwise approach for identifying other In-Combination plans and projects.

Using professional and scientific judgement, the key steps for assessing cumulative effects are as follows:

1. Defining the Cumulative Effects Spatial Scope (CESS)
2. Defining the Cumulative Effects Temporal Scope (CETS)
3. Impact identification
4. Pathway identification
5. Prediction
6. Identification of Plans or Projects that could act in combination
7. Screening Stage Cumulative Effects Assessment conclusion
8. Managing cumulative impacts - to be carried out as part of Stage 2 AA process

The CESS has been defined as 10km and the CETS as 1 year⁴. The definition of the CESS is based on acoustic survey equipment effective deterrence ranges as per JNCC Guidance on Assessing the Significance of Noise Disturbance against Harbour Porpoise SACs Conservation Objectives ([JNCC, 2020](#)). And the CETS is the Maritime Usage Licence period.

Using the above 8 step approach, and following a search of relevant databases undertaken on the 4th October 2024, the projects in Table 2 have been identified as potential in-combination projects.

The following plans, related to the development of the maritime environment were also identified:

- The Climate Action Plan 2024;
- Galway County Development Plan 2022-2028.

These plans promote sustainable development in the maritime environment and particularly Ireland's Climate Action Plan's renewable electricity target of 80% of energy generated from renewable electricity sources by 2030.

Likely significant in-combination effects between this project, the projects listed in Table 2 and two plans on the conservation objectives of Natura 2000 sites considered in this report cannot be excluded at this stage.

⁴ The applicant states in their application that the maritime usage activity will take 6 months to complete. MARA has applied a CETS of 1 year to allow for incumbent weather that may impede the activity.

Table 2: List of projects considered for in-combination assessment.

Application reference	Project description	Approximate distance from MUL area	Project Status	Possible in-combination effects
FS007161 & FS007543	Fuinneamh Sceirde Teoranta – site investigations	<50km	Approved – foreshore licences granted 2022 and 2023	Possible temporal overlap
FS007426	IRIS sub-sea fibre optic cable (main lay and construction)	Within MUL area	Approved – foreshore licence granted 2022	Spatial overlap with Deep Sea Fibre Networks Maritime Usage Area Within CESS Temporal overlap with MUL activity
FS006916	EirFrid Celtic Interconnector electricity cable	>100km	Approved – foreshore licence granted 2022	Temporal overlap with MUL activity
LIC230033	Apollo Submarine Cable System Ltd	>100km	Approved – permitted maritime usage licence granted 2024	Temporal overlap with MUL activity

Were mitigation measures considered during the screening process?

No

Step 4 Screening Determination Statement

The assessment of significant effects:

On the basis of the information on file, and having regard to:

- The nature and scale of the proposed development;
- The distance to the nearest European sites;
- The potential for in-combination effects with other plans and projects;
- The potential for physical disturbance and habitat loss;
- Possible disturbance from underwater noise; and,
- Possible visual and above water noise disturbance.

Having considered the legal framework applicable to Appropriate Assessment, it was concluded that the proposed maritime usage by **Deep Sea Fibre Networks Ltd to undertake marine environmental surveys for the purposes of site investigations to inform the feasibility of constructing a new subsea telecoms cable system for landfall at Ballyloughane County Galway traversing the Irish Maritime Area to the south west of Ireland (MUL230024)** will require Stage 2 Appropriate Assessment. It cannot be excluded on the basis of objective scientific information, following screening, that the proposed project, individually or in combination with other plans or projects, will have a significant effect on a European Site.

Conclusion		
	Tick as appropriate	Recommendation
(i) It is clear that there is no likelihood of significant/possible effects on a European site		
(ii) It is uncertain whether the proposal will have a significant/possible effect on a European site	√	Proceed to Stage 2 Appropriate Assessment
(iii) Significant effects are likely		
Signature of Recommending Officer	[Redacted Signature]	Date: 10/10/2024
Signature of Decision Maker	[Redacted Signature]	Date: 10/10/2024