



Screening for Appropriate Assessment for a Maritime Usage Licence Application

From Dublin City Council for ground investigation works
and environmental surveys west of the Tom Clarke
Bridge, Dublin City.

MARA Licence Reference: LIC230007

Step 1 - Description of Project/Proposal and local site characteristics

Brief description of the project

Dublin City Council has applied for a Maritime Usage Licence to carry out ground investigations works and environmental surveys to inform the design of the Point Bridge and Tom Clarke Bridge Widening Project in Dublin City.

The ground investigation works will consist of 5 no. boreholes (4 no. in the River Liffey), 2 no. slit trenches and concrete coring at one location. The works will include rotary core and Geobore S drilling, slit trenching, concrete coring, standpipes/piezometer installations and monitoring, in-situ testing and laboratory testing. The proposed boreholes will be of between 20 – 30m depth. All equipment that will be used for the drilling work will be placed on a barge and all drilling works will be through the river into underlying soils and rock.

The Environmental surveys will consist of a gas main survey, inspection of the pier wall and additional structural inspections for widening works.

The gas survey will require the use acoustic sub-bottom profiling and a vertical magnetic gradiometer for the detection of the buried infrastructure. A remotely operated unmanned surface vessel (USV), will be used for both sets of apparatus, and will locate the pipe acoustically.

A high frequency scanning multibeam Echo Sounder is proposed to be used on the USV to provide a detailed topographical survey of the north quay wall and Tom Clarke Bridge.

The ground Investigation works are scheduled to take a maximum of 3 months. The Structural inspection works are scheduled to take one week and the Gas Main Survey and Inspection of the Pier Wall are scheduled to take 2 days.

The Maritime Usage Licence period is for a period of 1 year.

Owing to uncertainty as to when the works will take place this screening for Appropriate Assessment addresses ecological scenarios that may take place at any given time in one calendar year.

Brief description of the site characteristics

The Maritime Usage Licence area is 3.66 hectares.

The works will take place in close proximity to both the upstream and downstream sides of the existing Tom Clarke Bridge structure and protective dolphins.

The works are also in close proximity to the St Patrick's Rowing club floating pontoon and the high-pressure gas main, which passes underneath the Liffey to the west of Tom Clarke Bridge.

The land-based investigation works are located on the existing North Quay wall campshires adjacent to the historic quay wall and the structure supporting the left turn lane from Tom Clarke Bridge to the North wall quay road.

The majority of the Maritime Usage Licence Area is consistently covered by estuarine waters; however areas of mudflats and stonewalls/rocks are located within the northern section of the area.

Step 2 - Identification of relevant Natura 2000 sites using Source-Pathway Receptor Model and compilation of information on Qualifying Interests and Conservation Objectives.

The Qualifying Interests (QI's) highlighted in **bold text** are screened in for Stage 2 Appropriate Assessment. This assessment was undertaken using the Source-Pathway-Receptor model. Distances are measured as straight line distances in open water, or along-shore coastal distances, depending on the site and QI's being considered.

Table 1: List of protect sites and their qualifying interests.

European Site Code	Distance from the Proposed Development (km) or other metric used	List of Qualifying Interests	Connections (Source-Pathway Receptors)	Qualifying Interests considered further in Screening Y/N	European Site Screened In for stage 2 Appropriate Assessment
South Dublin Bay SAC (Site Code IE000210)	3.2	Mudflats and sandflats not covered by sea-water at low tide [1140] Annual vegetation of drift lines [1210] Salicornia and other annuals colonising mud and sand [1310] Embryonic shifting dunes [2110]	No	No	No
North Dublin Bay SAC (Site Code IE000206)	3.5	Mudflats and sandflats not covered by seawater at low tide [1140] Annual vegetation of drift lines [1210] Salicornia and other annuals colonising mud and sand [1310] Atlantic salt meadows (<i>Glauco-Puccinellietalia maritimae</i>) [1330] Mediterranean salt meadows (<i>Juncetalia maritimi</i>) [1410] Embryonic shifting dunes [2110] Shifting dunes along the shoreline with <i>Ammophila arenaria</i> (white dunes) [2120] Fixed coastal dunes with herbaceous vegetation (grey dunes) [2130] Humid dune slacks [2190] <i>Petalophyllum ralfsii</i> (Petalwort) [1395]	No	No	No
Rockabill to Dalkey SAC (Site Code IE003000)	9.2	Reefs [1170]	No	No	

European Site Code	Distance from the Proposed Development (km) or other metric used	List of Qualifying Interests	Connections (Source-Pathway Receptors)	Qualifying Interests considered further in Screening Y/N	European Site Screened In for stage 2 Appropriate Assessment
		Phocoena phocoena (Harbour Porpoise) [1351]	Yes -within Harbour Porpoise Management Unit (JNCC, 2023) ¹	Yes – possible disturbance from underwater noise	Yes
Howth Head SAC (Site Code IE000202)	9.4	Vegetated sea cliffs of the Atlantic and Baltic coasts [1230] European dry heaths [4030]	No	No	No
Baldoyle Bay SAC (Site Code IE000199)	19	Mudflats and sandflats not covered by seawater at low tide [1140] Salicornia and other annuals colonising mud and sand [1310] Atlantic salt meadows (Glauco-Puccinellietalia maritimae) [1330] Mediterranean salt meadows (Juncetalia maritimi) [1410]	No	No	No
Ireland's Eye SAC (Site Code IE002193)	19.2	Perennial vegetation of stony banks [1220] Vegetated sea cliffs of the Atlantic and Baltic coasts [1230]	No	No	No
Malahide estuary SAC (Site Code IE 000205)	25.5	Mudflats and sandflats not covered by seawater at low tide [1140] Salicornia and other annuals colonising mud and sand [1310] Atlantic salt meadows (Glauco-Puccinellietalia maritimae) [1330] Mediterranean salt meadows (Juncetalia maritimi) [1410] Shifting dunes along the shoreline with Ammophila arenaria (white dunes) [2120] Fixed coastal dunes with herbaceous vegetation (grey dunes) [2130]	No	No	No
Lambay Island SAC (Site Code IE000204)	27.5	Reefs [1170] Vegetated sea cliffs of the Atlantic and Baltic coasts [1230] Halichoerus grypus (Grey Seal) [1364] Phoca vitulina (Harbour Seal) [1365]	No	No	

European Site Code	Distance from the Proposed Development (km) or other metric used	List of Qualifying Interests	Connections (Source-Pathway Receptors)	Qualifying Interests considered further in Screening Y/N	European Site Screened In for stage 2 Appropriate Assessment
		Phocoena phocoena (Harbour Porpoise) [1351]	Yes -within Harbour Porpoise Management Unit (JNCC, 2023) ¹	Yes – possible disturbance from underwater noise	Yes
Rogerstown Estuary SAC (Site code IE000208)	30.3	Estuaries [1130] Mudflats and sandflats not covered by seawater at low tide [1140] Salicornia and other annuals colonising mud and sand [1310] Atlantic salt meadows (<i>Glauco-Puccinellietalia maritima</i>) [1330] Mediterranean salt meadows (<i>Juncetalia maritimi</i>) [1410] Shifting dunes along the shoreline with <i>Ammophila arenaria</i> (white dunes) [2120] Fixed coastal dunes with herbaceous vegetation (grey dunes) [2130]	No	No	No
Codling Fault Zone SAC (Site code IE003015)	36.1	Submarine structures made by leaking gases [1180]	No	No	Yes
		Phocoena phocoena (Harbour Porpoise) [1351]	Yes - within Harbour Porpoise Management Unit (JNCC, 2023) ¹	Yes – possible disturbance from underwater noise	
Boyne Coast and Estuary [Site code IE001957]	58	Estuaries [1130] Mudflats and sandflats not covered by seawater at low tide [1140] Annual vegetation of driftlines [1210] Salicornia and other annuals colonising mud and sand [1310] Atlantic salt meadows (<i>Glauco-Puccinellietalia maritima</i>) [1330] Embryonic shifting dunes [2110] Shifting dunes along the shoreline with <i>Ammophila arenaria</i> (white dunes) [2120]	No	No	No

European Site Code	Distance from the Proposed Development (km) or other metric used	List of Qualifying Interests	Connections (Source-Pathway Receptors)	Qualifying Interests considered further in Screening Y/N	European Site Screened In for stage 2 Appropriate Assessment
		Fixed coastal dunes with herbaceous vegetation (grey dunes) [2130]			
Blackwater Bank SAC [Site code IE002953]	Within Management Unit for Harbour porpoise	Sandbanks which are slightly covered by sea water all the time [1110]	No	No	Yes
		Phocoena phocoena (Harbour Porpoise) [1351]	Within Harbour Porpoise Management Unit (JNCC, 2023) ¹	Yes – possible disturbance from underwater noise	
River Boyne and River Blackwater SAC [Site code IE002299]	62.4	Alkaline fens [7230] Alluvial forests with <i>Alnus glutinosa</i> and <i>Fraxinus excelsior</i> (Alno-Padion, <i>Alnion incanae</i> , <i>Salicion albae</i>) [91E0] <i>Lampetra fluviatilis</i> (River Lamprey) [1099] <i>Salmo salar</i> (Salmon) [1106] <i>Lutra lutra</i> (Otter) [1355]	No	No	No

European Site Code	Distance from the Proposed Development (km) or other metric used	List of Qualifying Interests	Connections (Source-Pathway Receptors)	Qualifying Interests considered further in Screening Y/N	European Site Screened In for stage 2 Appropriate Assessment
Slaney River Valley SAC [SitecodeIE000781]	131	Estuaries [1130] Mudflats and sandflats not covered by seawater at low tide[1140] Atlantic salt meadows (<i>Glauco-Puccinellietalia maritima</i>)[1330] Mediterranean salt meadows (<i>Juncetalia maritimi</i>) [1410] Water courses of plain to montane levels with the <i>Ranunculion fluitantis</i> and <i>Callitricho-Batrachion</i> vegetation [3260] Old sessile oakwoods with <i>Ilex</i> and <i>Blechnum</i> in the BritishIsles[91A0] Alluvial forests with <i>Alnus glutinosa</i> and <i>Fraxinus excelsior</i> (<i>Alno-Padion</i> , <i>Alnionincanae</i> , <i>Salicionalbae</i>)[91E0] <i>Margaritifera margaritifera</i> (Freshwater Pearl Mussel) [1029] <i>Petromyzon marinus</i> (Sea Lamprey) [1095] <i>Lampetra planeri</i> (Brook Lamprey) [1096] <i>Lampetra fluviatilis</i> (River Lamprey) [1099] <i>Alosa fallax fallax</i> (Twaite Shad) [1103] <i>Salmo salar</i> (Salmon) [1106] <i>Lutra lutra</i> (Otter) [1355]	No	No	Yes
		Phoca vitulina (Harbour Seal) [1365]	Yes - foraging ranges of up to 273km for Harbour Seal (Carter et al, 2022) ²	Yes – possible disturbance from underwater noise	
Saltee Islands SAC [Site code IE0007071]	164	Mudflats and sandflats not covered by seawater at low tide [1140] Large shallow inlets and bays [1160] Reefs [1170] Vegetated sea cliffs of the Atlantic and Baltic coasts [1230] Submerged or partially submerged sea caves[8330]	No	No	Yes

European Site Code	Distance from the Proposed Development (km) or other metric used	List of Qualifying Interests	Connections (Source-Pathway Receptors)	Qualifying Interests considered further in Screening Y/N	European Site Screened In for stage 2 Appropriate Assessment
		Halichoerus grypus (Grey Seal) [1364]	Yes - foraging ranges of up to 448km for Grey Seal (Carter et al, 2022) ²	Yes – possible disturbance from underwater noise	
Roaringwater Bay and Islands SAC [Site code IE000101]	Within Management Unit for Harbour porpoise	Large shallow inlets and bays [1160] Reefs [1170] Vegetated sea cliffs of the Atlantic and Baltic coasts [1230] European dry heaths [4030] Submerged or partially submerged sea caves [8330] Lutra lutra (Otter) [1355] Halichoerus grypus (Grey Seal) [1364]	No	No	Yes
		Phocoena phocoena (Harbour Porpoise) [1351]	Yes - within Harbour Porpoise Management Unit (JNCC, 2023) ¹	Yes – possible disturbance from underwater noise	
Blasket Islands SAC [Site code IE002172]	Within Management Unit for Harbour porpoise	Reefs [1170] Vegetated sea cliffs of the Atlantic and Baltic coasts [1230] European dry heaths [4030] Submerged or partially submerged sea caves [8330] Halichoerus grypus (Grey Seal) [1364]	No	No	Yes
		Phocoena phocoena (Harbour Porpoise) [1351]	Within Harbour Porpoise Management Unit (JNCC, 2023) ¹	Yes – possible disturbance from underwater noise	

European Site Code	Distance from the Proposed Development (km) or other metric used	List of Qualifying Interests	Connections (Source-Pathway Receptors)	Qualifying Interests considered further in Screening Y/N	European Site Screened In for stage 2 Appropriate Assessment
Carnsore Point SAC [Site code IE002269]	142	Mudflats and sandflats not covered by seawater at low tide [1140] Reefs [1170]	No	No	yes
		Phocoena phocoena (Harbour Porpoise) [1351]	Yes -within Harbour Porpoise Management Unit (JNCC, 2023) ¹	Yes – possible disturbance from underwater noise	
Hook Head SAC [Site code IE000764]	168 Within Management Unit for Harbour porpoise & Bottlenose Dolphin	Large shallow inlets and bays [1160] Reefs [1170] Vegetated sea cliffs of the Atlantic and Baltic coasts [1230]	No	No	Yes
		Tursiops truncatus (Common Bottlenose Dolphin) [1349] Phocoena phocoena (Harbour Porpoise) [1351]	Yes -within Harbour Porpoise & Bottlenose Dolphin Management Unit (JNCC, 2023) ¹	Yes – possible disturbance from underwater noise	
The Maidens [Site code UK0030384]	160	Halichoerus grypus (Grey Seal) [1364]	Yes - foraging ranges of up to 448km for Grey Seal (Carter et al, 2022) ²	Yes – possible disturbance from underwater noise	Yes
Kenmare River SAC [Site code IE002158]	Within Management Unit for Harbour porpoise	Large shallow inlets and bays [1160] Reefs [1170] Perennial vegetation of stony banks [1220] Vegetated sea cliffs of the Atlantic and Baltic coasts [1230] Atlantic salt meadows (<i>Glauco-Puccinellietalia maritimae</i>) [1330] Mediterranean salt meadows (<i>Juncetalia maritimi</i>) [1410]	No	No	

European Site Code	Distance from the Proposed Development (km) or other metric used	List of Qualifying Interests	Connections (Source-Pathway Receptors)	Qualifying Interests considered further in Screening Y/N	European Site Screened In for stage 2 Appropriate Assessment
		Shifting dunes along the shoreline with <i>Ammophila arenaria</i> (white dunes) [2120] Fixed coastal dunes with herbaceous vegetation (grey dunes) [2130] European dry heaths [4030] <i>Juniperus communis</i> formations on heaths or calcareous grasslands [5130] Calaminarian grasslands of the <i>Violetalia calaminariae</i> [6130] Submerged or partially submerged sea caves [8330] <i>Vertigo angustior</i> (Narrow-mouthed Whorl Snail) [1014] <i>Rhinolophus hipposideros</i> (Lesser Horseshoe Bat) [1303] <i>Lutra lutra</i> (Otter) [1355] <i>Phoca vitulina</i> (Harbour Seal) [1365]			Yes
		<i>Phocoena phocoena</i> (Harbour Porpoise) [1351]	Yes - Within Harbour Porpoise Management Unit (JNCC, 2023) ¹	Yes – possible disturbance from underwater noise	
Belgica Mound Province SAC [Site code IE002327]	Within Management Unit for Harbour porpoise	Reefs [1170] <i>Tursiops truncatus</i> (Common Bottlenose Dolphin) [1349]	No	No	Yes
		<i>Phocoena phocoena</i> (Harbour Porpoise) [1351]	Yes -within Harbour Porpoise Management Unit (JNCC, 2023) ¹	Yes – possible disturbance from underwater noise	

European Site Code	Distance from the Proposed Development (km) or other metric used	List of Qualifying Interests	Connections (Source-Pathway Receptors)	Qualifying Interests considered further in Screening Y/N	European Site Screened In for stage 2 Appropriate Assessment
Inishmore Island SAC [Site code IE000213]	Within Management Unit for Harbour porpoise	Coastal lagoons [1150] Reefs [1170] Perennial vegetation of stony banks [1220] Vegetated sea cliffs of the Atlantic and Baltic coasts [1230] Embryonic shifting dunes [2110] Shifting dunes along the shoreline with <i>Ammophila arenaria</i> (white dunes) [2120] Fixed coastal dunes with herbaceous vegetation (grey dunes) [2130] Dunes with <i>Salix repens</i> ssp. <i>argentea</i> (<i>Salicion arenariae</i>) [2170] Humid dune slacks [2190] Machairs (* in Ireland) [21A0] European dry heaths [4030] Alpine and Boreal heaths [4060] Semi-natural dry grasslands and scrubland facies on calcareous substrates (<i>Festuco-Brometalia</i>) (* important orchid sites) [6210] Lowland hay meadows (<i>Alopecurus pratensis</i> , <i>Sanguisorba officinalis</i>) [6510] Limestone pavements [8240] Submerged or partially submerged sea caves [8330] <i>Vertigo angustior</i> (Narrow-mouthed Whorl Snail) [1014]	No	No	Yes
		<i>Phocoena phocoena</i> (Harbour Porpoise) [1351]	Yes - within Harbour Porpoise Management Unit (JNCC, 2023) ¹	Yes – possible disturbance from underwater noise	

European Site Code	Distance from the Proposed Development (km) or other metric used	List of Qualifying Interests	Connections (Source-Pathway Receptors)	Qualifying Interests considered further in Screening Y/N	European Site Screened In for stage 2 Appropriate Assessment
Kilkieran Bay and Islands SAC [Site code IE002111]	Within Management Unit for Harbour porpoise	Mudflats and sandflats not covered by seawater at low tide [1140] Coastal lagoons [1150] Large shallow inlets and bays [1160] Reefs [1170] Atlantic salt meadows (<i>Glauco-Puccinellietalia maritima</i>) [1330] Mediterranean salt meadows (<i>Juncetalia maritimi</i>) [1410] Machairs (* in Ireland) [21A0] Oligotrophic to mesotrophic standing waters with vegetation of the Littorelletea uniflorae and/or Isoeto-Nanojuncetea [3130] Lowland hay meadows (<i>Alopecurus pratensis</i> , <i>Sanguisorba officinalis</i>) [6510] Lutra lutra (Otter) [1355] Phoca vitulina (Harbour Seal) [1365] Najas flexilis (Slender Naiad) [1833]	No	No	Yes
		Phocoena phocoena (Harbour Porpoise) [1351]	Yes - within Harbour Porpoise Management Unit (JNCC, 2023) ¹	Yes – possible disturbance from underwater noise	
West Connacht Coast SAC [Site code IE002998]	Within Management Unit for Harbour porpoise	Tursiops truncatus (Common Bottlenose Dolphin) [1349]	No	No	Yes
		Phocoena phocoena (Harbour Porpoise) [1351]	Yes - within Harbour Porpoise Management Unit (JNCC, 2023) ¹	Yes – possible disturbance from underwater noise	

European Site Code	Distance from the Proposed Development (km) or other metric used	List of Qualifying Interests	Connections (Source-Pathway Receptors)	Qualifying Interests considered further in Screening Y/N	European Site Screened In for stage 2 Appropriate Assessment
Bunduff Lough and Machair/Trawalua/Mullaghmore SAC [000625]	Within Management Unit for Harbour porpoise	Mudflats and sandflats not covered by seawater at low tide [1140] Large shallow inlets and bays [1160] Reefs [1170] Shifting dunes along the shoreline with <i>Ammophila arenaria</i> (white dunes) [2120] Fixed coastal dunes with herbaceous vegetation (grey dunes) [2130] Humid dune slacks [2190] Machairs (* in Ireland) [21A0] <i>Juniperus communis</i> formations on heaths or calcareous grasslands [5130] Semi-natural dry grasslands and scrubland facies on calcareous substrates (<i>Festuco-Brometalia</i>) (* important orchid sites) [6210] Alkaline fens [7230] <i>Euphydryas aurinia</i> (Marsh Fritillary) [1065] <i>Petalophyllum ralfsii</i> (Petalwort) [1395]	No	No	Yes
		<i>Phocoena phocoena</i> (Harbour Porpoise) [1351]	Yes - within Harbour Porpoise Management Unit (JNCC, 2023) ¹	Yes – possible disturbance from underwater noise	
Lley Peninsula and the Sarnau SAC [Site code UK0013117]	Within Management Unit for Bottlenose Dolphin	<i>Tursiops truncatus</i> (Common Bottlenose Dolphin) [1349]	Yes - within Bottlenose Dolphin Management Unit (JNCC, 2023) ¹	Yes – possible disturbance from underwater noise	Yes

European Site Code	Distance from the Proposed Development (km) or other metric used	List of Qualifying Interests	Connections (Source-Pathway Receptors)	Qualifying Interests considered further in Screening Y/N	European Site Screened In for stage 2 Appropriate Assessment
Cardigan Bay SAC [Site code UK0012712]	Within Management Unit for Bottlenose Dolphin	Tursiops truncatus (Common Bottlenose Dolphin) [1349]	Yes - within Bottlenose Dolphin Management Unit (JNCC, 2023) ¹	Yes – possible disturbance from underwater noise	Yes
North Anglesey Marine SAC [Site code UK0030398]	Within Management Unit for Harbour porpoise	Phocoena phocoena (Harbour Porpoise) [1351]	Yes - within Harbour Porpoise Management Unit (JNCC, 2023) ¹	Yes – possible disturbance from underwater noise	Yes
West Wales Marine SAC [Site code UK0030397]	Within Management Unit for Harbour porpoise	Phocoena phocoena (Harbour Porpoise) [1351]	Yes - within Harbour Porpoise Management Unit (JNCC, 2023) ¹	Yes – possible disturbance from underwater noise	Yes
Bristol Channel Approaches SAC [Site code UK003039]	Within Management Unit for Harbour porpoise	Phocoena phocoena (Harbour Porpoise) [1351]	Yes - within Harbour Porpoise Management Unit (JNCC, 2023) ¹	Yes – possible disturbance from underwater noise	Yes
Récifs et landes de la Hague SAC [Site code FR2500084]	Within Management Unit for Harbour porpoise	Phocoena phocoena (Harbour Porpoise) [1351]	Yes - within Harbour Porpoise Management Unit (JNCC, 2023) ¹	Yes – possible disturbance from underwater noise	Yes

European Site Code	Distance from the Proposed Development (km) or other metric used	List of Qualifying Interests	Connections (Source-Pathway Receptors)	Qualifying Interests considered further in Screening Y/N	European Site Screened In for stage 2 Appropriate Assessment
Anse de Vauville SAC [Site code FR2502019]	Within Management Unit for Harbour porpoise	Phocoena phocoena (Harbour Porpoise) [1351]	Yes - within Harbour Porpoise Management Unit (JNCC, 2023) ¹	Yes – possible disturbance from underwater noise	Yes
Banc et récifs de Surtainville SAC [Site code FR2502018]	Within Management Unit for Harbour porpoise	Phocoena phocoena (Harbour Porpoise) [1351]	Yes - within Harbour Porpoise Management Unit (JNCC, 2023) ¹	Yes – possible disturbance from underwater noise	Yes
Chausey [Site code FR2500079]	Within Management Unit for Harbour porpoise	Phocoena phocoena (Harbour Porpoise) [1351]	Yes - within Harbour Porpoise Management Unit (JNCC, 2023) ¹	Yes – possible disturbance from underwater noise	Yes
Baie du Mont Saint-Michel [Site code FR2500077]	Within Management Unit for Harbour porpoise	Phocoena phocoena (Harbour Porpoise) [1351]	Yes - within Harbour Porpoise Management Unit (JNCC, 2023) ¹	Yes – possible disturbance from underwater noise	Yes
Estuaire de la Rance SAC [Site code FR5300061]	Within Management Unit for Harbour porpoise	Phocoena phocoena (Harbour Porpoise) [1351]	Yes - within Harbour Porpoise Management Unit (JNCC, 2023) ¹	Yes – possible disturbance from underwater noise	Yes

European Site Code	Distance from the Proposed Development (km) or other metric used	List of Qualifying Interests	Connections (Source-Pathway Receptors)	Qualifying Interests considered further in Screening Y/N	European Site Screened In for stage 2 Appropriate Assessment
Baie de Lancieux, Baie de l'Arguenon, Archipel de Saint Malo et Dinard [Site code FR5300012]	Within Management Unit for Harbour porpoise	Phocoena phocoena (Harbour Porpoise) [1351]	Yes - within Harbour Porpoise Management Unit (JNCC, 2023) ¹	Yes – possible disturbance from underwater noise	Yes
Cap d'Erquy-Cap Fréhel [Site code FR5300011]	Within Management Unit for Harbour porpoise	Phocoena phocoena (Harbour Porpoise) [1351]	Yes - within Harbour Porpoise Management Unit (JNCC, 2023) ¹	Yes – possible disturbance from underwater noise	Yes
Baie de Saint-Brieuc [Site code FR5300066]	Within Management Unit for Harbour porpoise	Phocoena phocoena (Harbour Porpoise) [1351]	Yes - within Harbour Porpoise Management Unit (JNCC, 2023) ¹	Yes – possible disturbance from underwater noise	Yes
Tregor Goëlo [Site code FR5310070]	Within Management Unit for Harbour porpoise	Phocoena phocoena (Harbour Porpoise) [1351]	Yes - within Harbour Porpoise Management Unit (JNCC, 2023) ¹	Yes – possible disturbance from underwater noise	Yes
Côte de Granit rose-Sept-Iles [Site code FR5300009]	Within Management Unit for Harbour porpoise	Phocoena phocoena (Harbour Porpoise) [1351]	Yes - within Harbour Porpoise Management Unit (JNCC, 2023) ¹	Yes – possible disturbance from underwater noise	Yes

European Site Code	Distance from the Proposed Development (km) or other metric used	List of Qualifying Interests	Connections (Source-Pathway Receptors)	Qualifying Interests considered further in Screening Y/N	European Site Screened In for stage 2 Appropriate Assessment
Nord Bretagne DH [Site code FR2502022]	Within Management Unit for Harbour porpoise	Phocoena phocoena (Harbour Porpoise) [1351]	Yes - within Harbour Porpoise Management Unit (JNCC, 2023) ¹	Yes – possible disturbance from underwater noise	Yes
Baie de Morlaix SAC [Site code FR5300015]	Within Management Unit for Harbour porpoise	Phocoena phocoena (Harbour Porpoise) [1351]	Yes - within Harbour Porpoise Management Unit (JNCC, 2023) ¹	Yes – possible disturbance from underwater noise	Yes
Abers - Côte des légendes [Site code FR5300017]	Within Management Unit for Harbour porpoise	Phocoena phocoena (Harbour Porpoise) [1351]	Yes - within Harbour Porpoise Management Unit (JNCC, 2023) ¹	Yes – possible disturbance from underwater noise	Yes
Ouessant-Molène [Site code FR5300018]	Within Management Unit for Harbour porpoise	Phocoena phocoena (Harbour Porpoise) [1351]	Yes - within Harbour Porpoise Management Unit (JNCC, 2023) ¹	Yes – possible disturbance from underwater noise	Yes
Côtes de Crozon [Site code FR5302006]	Within Management Unit for Harbour porpoise	Phocoena phocoena (Harbour Porpoise) [1351]	Yes - within Harbour Porpoise Management Unit (JNCC, 2023) ¹	Yes – possible disturbance from underwater noise	Yes

European Site Code	Distance from the Proposed Development (km) or other metric used	List of Qualifying Interests	Connections (Source-Pathway Receptors)	Qualifying Interests considered further in Screening Y/N	European Site Screened In for stage 2 Appropriate Assessment
Mers Celtiques – Talus du golfe de Gascogne [Site code FR5302015]	Within Management Unit for Harbour porpoise	Phocoena phocoena (Harbour Porpoise) [1351]	Yes - within Harbour Porpoise Management Unit (JNCC, 2023) ¹	Yes – possible disturbance from underwater noise	Yes
Rivière Leguer, forêts de Beffou, Coat an Noz et Coat an Hay [Site code FR5300008]	Within Management Unit for Harbour porpoise	Phocoena phocoena (Harbour Porpoise) [1351]	Yes - within Harbour Porpoise Management Unit (JNCC, 2023) ¹	Yes – possible disturbance from underwater noise	Yes
Estuaire de la Rance [Site code FR53000061]	Within Management Unit for Harbour porpoise	Phocoena phocoena (Harbour Porpoise) [1351]	Yes - within Harbour Porpoise Management Unit (JNCC, 2023) ¹	Yes – possible disturbance from underwater noise	Yes
Chaussée de Sein [Site code FR5302007]	Within Management Unit for Harbour porpoise	Phocoena phocoena (Harbour Porpoise) [1351]	Yes - within Harbour Porpoise Management Unit (JNCC, 2023) ¹	Yes – possible disturbance from underwater noise	Yes
Récifs du talus du golfe de Gascogne [Site code FR5302016]	Within Management Unit for Harbour porpoise	Phocoena phocoena (Harbour Porpoise) [1351]	Yes - within Harbour Porpoise Management Unit (JNCC, 2023) ¹	Yes – possible disturbance from underwater noise	Yes
South Dublin Bay and River Polka SPA (Site IE004024)	1.5	Light-bellied Brent Goose (<i>Branta bernicla hrota</i>) [A046] Oystercatcher (<i>Haematopus ostralegus</i>) [A130] Ringed Plover (<i>Charadrius hiaticula</i>) [A137]	No	No	

European Site Code	Distance from the Proposed Development (km) or other metric used	List of Qualifying Interests	Connections (Source-Pathway Receptors)	Qualifying Interests considered further in Screening Y/N	European Site Screened In for stage 2 Appropriate Assessment
		<p>Grey Plover (<i>Pluvialis squatarola</i>) [A141] Knot (<i>Calidris canutus</i>) [A143] Sanderling (<i>Calidris alba</i>) [A144] Dunlin (<i>Calidris alpina</i>) [A149] Bar-tailed Godwit (<i>Limosa lapponica</i>) [A157] Redshank (<i>Tringa totanus</i>) [A162] Wetland and Waterbirds [A999]</p> <p>Black-headed Gull (<i>Chroicocephalus ridibundus</i>) [A179] Roseate Tern (<i>Sterna dougallii</i>) [A192] Common Tern (<i>Sterna hirundo</i>) [A193] Arctic Tern (<i>Sterna paradisaea</i>) [A194]</p>	Yes – within foraging range of project site boundary	Yes – possible visual & above water noise disturbance	Yes
North Bull Island SPA (Site Code IE004006)	4.1	<p>Light-bellied Brent Goose (<i>Branta bernicla hrota</i>) [A046] Shelduck (<i>Tadorna tadorna</i>) [A048] Teal (<i>Anas crecca</i>) [A052] Pintail (<i>Anas acuta</i>) [A054] Shoveler (<i>Anas clypeata</i>) [A056] Oystercatcher (<i>Haematopus ostralegus</i>) [A130] Golden Plover (<i>Pluvialis apricaria</i>) [A140] Grey Plover (<i>Pluvialis squatarola</i>) [A141] Knot (<i>Calidris canutus</i>) [A143] Sanderling (<i>Calidris alba</i>) [A144] Dunlin (<i>Calidris alpina</i>) [A149] Black-tailed Godwit (<i>Limosa limosa</i>) [A156] Bar-tailed Godwit (<i>Limosa lapponica</i>) [A157] Curlew (<i>Numenius arquata</i>) [A160] Redshank (<i>Tringa totanus</i>) [A162] Turnstone (<i>Arenaria interpres</i>) [A169] Wetland and Waterbirds [A999]</p> <p>Black-headed Gull (<i>Chroicocephalus ridibundus</i>) [A179]</p>	No	No	Yes

European Site Code	Distance from the Proposed Development (km) or other metric used	List of Qualifying Interests	Connections (Source-Pathway Receptors)	Qualifying Interests considered further in Screening Y/N	European Site Screened In for stage 2 Appropriate Assessment
North West Irish Sea SPA (Site Code IE004236)	5.4	Red-throated Diver (<i>Gavia stellata</i>) [A001] Great Northern Diver (<i>Gavia immer</i>) [A003] Fulmar (<i>Fulmarus glacialis</i>) [A009] Manx Shearwater (<i>Puffinus puffinus</i>) [A013] Cormorant (<i>Phalacrocorax carbo</i>) [A017] Shag (<i>Phalacrocorax aristotelis</i>) [A018] Common Scoter (<i>Melanitta nigra</i>) [A065] Little Gull (<i>Larus minutus</i>) [A177] Black-headed Gull (<i>Chroicocephalus ridibundus</i>) [A179] Common Gull (<i>Larus canus</i>) [A182] Lesser Black-backed Gull (<i>Larus fuscus</i>) [A183] Herring Gull (<i>Larus argentatus</i>) [A184] Great Black-backed Gull (<i>Larus marinus</i>) [A187] Kittiwake (<i>Rissa tridactyla</i>) [A188] Roseate Tern (<i>Sterna dougallii</i>) [A192] Common Tern (<i>Sterna hirundo</i>) [A193] Arctic Tern (<i>Sterna paradisaea</i>) [A194] Little Tern (<i>Sterna albifrons</i>) [A195] Guillemot (<i>Uria aalge</i>) [A199] Razorbill (<i>Alca torda</i>) [A200] Puffin (<i>Fratercula arctica</i>) [A204]	Yes – within foraging range of project site boundary	Yes – possible visual & above water noise disturbance	Yes
Baldoyle Bay SPA (Site Code IE	7.4	Light-bellied Brent Goose (<i>Branta bernicla hrota</i>) [A046] Shelduck (<i>Tadorna tadorna</i>) [A048] Ringed Plover (<i>Charadrius hiaticula</i>) [A137] Golden Plover (<i>Pluvialis apricaria</i>) [A140] Grey Plover (<i>Pluvialis squatarola</i>) [A141] Bar-tailed Godwit (<i>Limosa lapponica</i>) [A157]	No	No	No

European Site Code	Distance from the Proposed Development (km) or other metric used	List of Qualifying Interests	Connections (Source-Pathway Receptors)	Qualifying Interests considered further in Screening Y/N	European Site Screened In for stage 2 Appropriate Assessment
		Wetland and Waterbirds [A999]			
Dalkey Island SPA (Site Code IE004172)	9.7	Roseate Tern (<i>Sterna dougallii</i>) [A192] Common Tern (<i>Sterna hirundo</i>) [A193] Arctic Tern (<i>Sterna paradisaea</i>) [A194]	No	No	No
Ireland's Eye SPA (Site Code IE004117)	10.6	Herring Gull (<i>Larus argentatus</i>) [A184] Kittiwake (<i>Rissa tridactyla</i>) [A188] Cormorant (<i>Phalacrocorax carbo</i>) [A017] Guillemot (<i>Uria aalge</i>) [A199] Razorbill (<i>Alca torda</i>) [A200]	Yes – within foraging range of project site boundary	Yes – possible visual & above water noise disturbance	Yes
Howth Head Coast SPA (Site Code IE004113)	11.8	Kittiwake (<i>Rissa tridactyla</i>) [A188]	Yes – within foraging range of project site boundary	Yes – possible visual & above water noise disturbance	Yes
Malahide Estuary SPA (Site Code IE004025)	12.2	Great Crested Grebe (<i>Podiceps cristatus</i>) [A005] Light-bellied Brent Goose (<i>Branta bernicla hrota</i>) [A046] Shelduck (<i>Tadorna tadorna</i>) [A048] Pintail (<i>Anas acuta</i>) [A054] Goldeneye (<i>Bucephala clangula</i>) [A067] Red-breasted Merganser (<i>Mergus serrator</i>) [A069] Oystercatcher (<i>Haematopus ostralegus</i>) [A130] Golden Plover (<i>Pluvialis apricaria</i>) [A140] Grey Plover (<i>Pluvialis squatarola</i>) [A141] Knot (<i>Calidris canutus</i>) [A143] Dunlin (<i>Calidris alpina</i>) [A149] Black-tailed Godwit (<i>Limosa limosa</i>) [A156] Bar-tailed Godwit (<i>Limosa lapponica</i>) [A157] Redshank (<i>Tringa totanus</i>) [A162]	No	No	No

European Site Code	Distance from the Proposed Development (km) or other metric used	List of Qualifying Interests	Connections (Source-Pathway Receptors)	Qualifying Interests considered further in Screening Y/N	European Site Screened In for stage 2 Appropriate Assessment
		Wetland and Waterbirds [A999]			
Rogerstown Estuary SPA (Site Code IE004015)	17.7	Greylag Goose (<i>Anser anser</i>) [A043] Light-bellied Brent Goose (<i>Branta bernicla hrota</i>) [A046] Shelduck (<i>Tadorna tadorna</i>) [A048] Shoveler (<i>Anas clypeata</i>) [A056] Oystercatcher (<i>Haematopus ostralegus</i>) [A130] Ringed Plover (<i>Charadrius hiaticula</i>) [A137] Grey Plover (<i>Pluvialis squatarola</i>) [A141] Knot (<i>Calidris canutus</i>) [A143] Dunlin (<i>Calidris alpina</i>) [A149] Black-tailed Godwit (<i>Limosa limosa</i>) [A156] Redshank (<i>Tringa totanus</i>) [A162] Wetland and Waterbirds [A999]	No	No	No
Lambay Island SPA (Site Code IE004069)	18.9	Greylag Goose (<i>Anser anser</i>) [A043] Fulmar (<i>Fulmarus glacialis</i>) [A009] Cormorant (<i>Phalacrocorax carbo</i>) [A017] Shag (<i>Phalacrocorax aristotelis</i>) [A018] Lesser Black-backed Gull (<i>Larus fuscus</i>) [A183] Herring Gull (<i>Larus argentatus</i>) [A184] Kittiwake (<i>Rissa tridactyla</i>) [A188] Guillemot (<i>Uria aalge</i>) [A199] Razorbill (<i>Alca torda</i>) [A200] Puffin (<i>Fratercula arctica</i>) [A204]	Yes – within foraging range of project site boundary	Yes – possible visual & above water noise disturbance	Yes

European Site Code	Distance from the Proposed Development (km) or other metric used	List of Qualifying Interests	Connections (Source-Pathway Receptors)	Qualifying Interests considered further in Screening Y/N	European Site Screened In for stage 2 Appropriate Assessment
The Murrough SPA (Site code: 004186)	25.4	Red-throated Diver (<i>Gavia stellata</i>) [A001] Greylag Goose (<i>Anser anser</i>) [A043] Light-bellied Brent Goose (<i>Branta bernicla hrota</i>) [A046] Wigeon (<i>Anas penelope</i>) [A050] Teal (<i>Anas crecca</i>) [A052] Wetland and Waterbirds [A999] Little Tern (<i>Sterna albifrons</i>) [A195] Herring Gull (<i>Larus argentatus</i>) [A184] Black-headed Gull (<i>Chroicocephalus ridibundus</i>) [A179]	No Yes – within foraging range of project site boundary	No Yes – possible visual & above water noise disturbance	No Yes
Rockabill SPA (Site code:004014)	26.6	Purple Sandpiper (<i>Calidris maritima</i>) [A148] Roseate Tern (<i>Sterna dougallii</i>) [A192] Common Tern (<i>Sterna hirundo</i>) [A193] Arctic Tern (<i>Sterna paradisaea</i>) [A194]	No	No	No
Skerries Islands SPA (Site code: 004122)	26.1	Cormorant (<i>Phalacrocorax carbo</i>) [A017] Shag (<i>Phalacrocorax aristotelis</i>) [A018] Light-bellied Brent Goose (<i>Branta bernicla hrota</i>) [A046] Purple Sandpiper (<i>Calidris maritima</i>) [A148] Turnstone (<i>Arenaria interpres</i>) [A169] Herring Gull (<i>Larus argentatus</i>) [A184]	No Yes – within foraging range of project site boundary	No Yes – possible visual & above water noise disturbance	No Yes
River Nanny Estuary and Shore SPA (Site code: 004158)	34.1	Oystercatcher (<i>Haematopus ostralegus</i>) [A130] Ringed Plover (<i>Charadrius hiaticula</i>) [A137] Golden Plover (<i>Pluvialis apricaria</i>) [A140] Knot (<i>Calidris canutus</i>) [A143] Sanderling (<i>Calidris alba</i>) [A144] Wetland and Waterbirds [A999]	No	No	

European Site Code	Distance from the Proposed Development (km) or other metric used	List of Qualifying Interests	Connections (Source-Pathway Receptors)	Qualifying Interests considered further in Screening Y/N	European Site Screened In for stage 2 Appropriate Assessment
		Herring Gull (<i>Larus argentatus</i>) [A184]	Yes – within foraging range of project site boundary	Yes – possible visual & above water noise disturbance	Yes
Boyne Estuary SPA (Site code: 004080)	42	Shelduck (<i>Tadorna tadorna</i>) [A048] Oystercatcher (<i>Haematopus ostralegus</i>) [A130] Golden Plover (<i>Pluvialis apricaria</i>) [A140] Grey Plover (<i>Pluvialis squatarola</i>) [A141] Lapwing (<i>Vanellus vanellus</i>) [A142] Knot (<i>Calidris canutus</i>) [A143] Sanderling (<i>Calidris alba</i>) [A144] Black-tailed Godwit (<i>Limosa limosa</i>) [A156] Redshank (<i>Tringa totanus</i>) [A162] Turnstone (<i>Arenaria interpres</i>) [A169] Little Tern (<i>Sterna albifrons</i>) [A195] Wetland and Waterbirds [A999]	No	No	No
Wickow Head SPA (Site code: 004127)	42.5	Kittiwake (<i>Rissa tridactyla</i>) [A188]	Yes – within foraging range of project site boundary	Yes – possible visual & above water noise disturbance	Yes
Dundalk Bay SPA (Site code: 004026)	58.1	Great Crested Grebe (<i>Podiceps cristatus</i>) [A005] Greylag Goose (<i>Anser anser</i>) [A043] Light-bellied Brent Goose (<i>Branta bernicla hrota</i>) [A046] Shelduck (<i>Tadorna tadorna</i>) [A048] Teal (<i>Anas crecca</i>) [A052]			

European Site Code	Distance from the Proposed Development (km) or other metric used	List of Qualifying Interests	Connections (Source-Pathway Receptors)	Qualifying Interests considered further in Screening Y/N	European Site Screened In for stage 2 Appropriate Assessment
		Mallard (<i>Anas platyrhynchos</i>) [A053] Pintail (<i>Anas acuta</i>) [A054] Common Scoter (<i>Melanitta nigra</i>) [A065] Red-breasted Merganser (<i>Mergus serrator</i>) [A069] Oystercatcher (<i>Haematopus ostralegus</i>) [A130] Ringed Plover (<i>Charadrius hiaticula</i>) [A137] Golden Plover (<i>Pluvialis apricaria</i>) [A140] Grey Plover (<i>Pluvialis squatarola</i>) [A141] Lapwing (<i>Vanellus vanellus</i>) [A142] Knot (<i>Calidris canutus</i>) [A143] Dunlin (<i>Calidris alpina</i>) [A149] Black-tailed Godwit (<i>Limosa limosa</i>) [A156] Bar-tailed Godwit (<i>Limosa lapponica</i>) [A157] Curlew (<i>Numenius arquata</i>) [A160] Redshank (<i>Tringa totanus</i>) [A162] Black-headed Gull (<i>Chroicocephalus ridibundus</i>) [A179] Common Gull (<i>Larus canus</i>) [A182] Wetland and Waterbirds [A999] Herring Gull (<i>Larus argentatus</i>) [A184]	<p style="text-align: center;">No</p> <p style="text-align: center;">Yes – within foraging range of project site boundary</p>	<p style="text-align: center;">No</p> <p style="text-align: center;">Yes – possible visual & above water noise disturbance</p>	<p style="text-align: center;">Yes</p>

Step 3 Assessment of likely significant effects

Identify all potential direct and indirect impacts that may have an effect on the conservation objectives of a European site, taking into account the size and scale of the project	
Potential Impacts	Possible Significance of potential Impacts (duration, magnitude etc.)
Disturbance from underwater noise	Possible temporal impacts on marine mammals.
Visual & above water noise disturbance	Possible temporal impacts on birds

In-Combination Effects

MARA has developed a stepwise approach for identifying other In-Combination plans and projects.

Using professional and scientific judgement, the key steps for assessing cumulative effects are as follows:

1. Defining the Cumulative Effects Spatial Scope (CESS)
2. Defining the Cumulative Effects Temporal Scope (CETS)
3. Impact identification
4. Pathway identification
5. Prediction
6. Identification of Plans or Projects that could act in combination
7. Screening Stage Cumulative Effects Assessment conclusion
8. Managing cumulative impacts - to be carried out as part of Stage 2 AA process

The CESS has been defined as 10 km and the CETS as . The CESS 1 year defined with reference to JNCC Effective Deterrent Ranges (JNCC, 2020)³ and the CETS is the maximum estimated project completion time.

Using the above 8 step approach, and following a search of relevant databases undertaken on the 4th September 2024, the below project(s) have been identified as potential in-combination projects:

Application reference no.	Project	Approximate Distance from MUL Area	Project Status	Cumulative Effects
FS007546	Codling Wind Park Site investigation	Overlaps with DCC MUL application area	Proposed – application submitted 22/04/20	Spatial overlaps with DCC Maritime Usage Licence Area. Within the CESS. Possible temporal overlap
FS007472	LIR Offshore Array ltd Site Investigations for proposed offshore windfarm	Overlaps with DCC MUL application area	Proposed – application submitted 22/09/22	Spatial overlaps with DCC Maritime Usage Licence Area. Within the CESS. Possible temporal overlap
FS007546	Site Investigations for proposed Offshore Wind Farm, off counties Wicklow and Dublin	Overlaps with DCC MUL application area	Approved but not completed - licence granted 19/05/2022	Spatial overlaps with DCC Maritime Usage Licence Area. Within the CESS. Possible temporal overlap
FS007392	LIR Offshore Array ltd Site Investigations for proposed offshore windfarm	Overlaps with DCC MUL application area	Proposed–Foreshore licence submitted 22/07/22	Spatial overlaps with DCC Maritime Usage Licence Area. Within the CESS. Possible temporal overlap
FS007132	Dublin Port Maintenance Dredging	Overlaps with DCC MUL application area	Approved but not completed - licence granted 19/05/2022	Spatial overlaps with DCC Maritime Usage Licence Area. Within the CESS. Possible temporal overlap

FS007164	Dublin Port Capital Dredging Project	Overlaps with DCC MUL application area	Approved but not completed - licence granted 09/01/2024	Spatial overlaps with DCC Maritime Usage Licence Area. Within the CESS. Possible temporal overlap
S0024-02	Dublin Port Company – Dumping at Sea Permit	Overlaps with DCC MUL application area	Approved but not completed - permit granted 27/07/2022	Spatial overlaps with DCC Maritime Usage Licence Area. Within the CESS. Possible temporal overlap
S0004-03	Dublin Port maintenance dredging permit	Overlaps with DCC MUL application area	Approved but not completed – permit granted 04/10/2022	Spatial overlaps with DCC Maritime Usage Licence Area. Within the CESS. Possible temporal overlap
S0033-01	Dublin Harbour Capital Dredging	Less than 1km from DCC MUL application area	Proposed– permit submitted 26/08/21	No spatial overlap with DCC Maritime Usage Licence Area. Within the CESS. Possible temporal overlap
FS007045	Codling Wind Park Site investigation	Less than 1km from DCC MUL application area	Proposed – application submitted 22/04/20	No spatial overlap with DCC Maritime Usage Licence Area. Within the CESS. Possible temporal overlap
3872/20	Irish Bitumen Storage Limited, Alexandra Road, Dublin Port, Dublin 1, D01 V0V2	Less than 5km from DCC MUL application area	Permission granted 08/04/21	No spatial overlap with DCC Maritime Usage Licence Area. Within the CESS. Possible temporal overlap

3623/20	Poolbeg generating Station - demolition and remediation project	Less than 5km from DCC MUL application area	Permission granted 07/05/21	No spatial overlap with DCC Maritime Usage Licence Area. Within the CESS. Possible temporal overlap
3711/18	Lands at berth 47A adjacent to Pigeon House Road	Less than 5km from DCC MUL application area	Permission granted 03/07/19	No spatial overlap with DCC Maritime Usage Licence Area. Within the CESS. Possible temporal overlap
3638/18	Former Calor Yard and Ferry Terminals 1 and 2, Dublin Port, Dublin 1	Less than 5km from DCC MUL application area	Permission granted 28/11/18	No spatial overlap with DCC Maritime Usage Licence Area. Within the CESS. Possible temporal overlap
3540/18	Calor Office Site, Tolka Quay Road, Dublin Port, Dublin 1	Less than 5km from DCC MUL application area	Permission granted 13/09/18	No spatial overlap with DCC Maritime Usage Licence Area. Within the CESS. Possible temporal overlap
3540/18	The Hammond Lane Metal Company Ltd., Pigeon House Road, Ringsend, Dublin 4	Less than 5km from DCC MUL application area	Permission granted 20/03/18	No spatial overlap with DCC Maritime Usage Licence Area. Within the CESS. Possible temporal overlap
3084/16	Dublin Port, Alexandria Road, Dublin 1 Application for internal and external roads and associated works.	Less than 5km from DCC MUL application area	Permission granted 06/06/17	No spatial overlap with DCC Maritime Usage Licence Area. Within the CESS. Possible temporal overlap
PA29N.320250	Dublin Port Company - Proposed '3FM Project' consisting a Southern Port Access Route and road network improvements, construction of a Lo-Lo container	Less than 5km from DCC MUL application area	Proposed – Dublin City Council, SID application to ABP 23/07/24	No spatial overlap with Dublin Port Maritime Usage Licence Area. Within the CESS. Possible temporal overlap

	terminal, Ro-Ro freight terminal and other works			
FS007367	Greystones (OWL) Windfarm Ltd. proposing to develop windfarm off Dublin/Wicklow	Overlaps with DCC MUL application area	Proposed – application submitted 29/06/22	Spatial overlaps with DCC Maritime Usage Licence Area. Within the CESS. Possible temporal overlap
FS007605	Irish water benthic Survey Benthic surveys of proposed outfall pipe	Less than 10km from DCC MUL application area	Proposed–Foreshore licence submitted 25/11/22	No spatial overlap with DCC Maritime Usage Licence Area. Within the CESS. Possible temporal overlap
FS007188	RWE Dublin Array Offshore Windfarm	Less than 10km from DCC MUL application area	Proposed–Foreshore licence submitted 01/10/21	Spatial overlaps with DCC Maritime Usage Licence Area. Within the CESS. Possible temporal overlap
LIC230016	Microsoft Dublin Port	Less than 10km from DCC MUL application area	Proposed – Maritime Usage Licence issued 28/06/2024	No spatial overlap with DCC Maritime Usage Licence Area. Within the CESS. Possible temporal overlap
FS006893	FS006893 Dublin Port Company MP2 Project	Less than 10km from DCC MUL application area	Proposed – Foreshore Licence issued 12/09/2022	No spatial overlap with DCC Maritime Usage Licence Area. Outside the CESS. Possible temporal overlap

The following plans, related to the development of the maritime environment were also identified:

- The Climate Action Plan 2023;
- River Basin Management Plan (RBMP);
- Dublin City Development Plan 2016 – 2022
- Poolbeg West Planning Scheme April 2019

These plans promote sustainable development in the maritime environment and particularly Ireland's Climate Action Plan's renewable electricity target of 80% of energy generated from renewable electricity sources by 2030.

Likely significant in-combination effects between this project and the above listed projects and plans on the conservation objectives of Natura 2000 sites considered in this report cannot be excluded at this stage.

Were mitigation measures considered during the screening process?

No

¹ JNCC 2023 - IAMMWG. 2023. Review of Management Unit boundaries for cetaceans in UK waters (2023). JNCC Report 734, JNCC, Peterborough, ISSN 0963-8091.

² Carter et al, 2022 - Carter et al, 2022. Sympatric Seals, Satellite Tracking and Protected Areas: Habitat-Based Distribution Estimates for Conservation and Management, *Frontiers in Marine Science*, v9 2022.

³ JNCC, 2020 - JNCC (2020). Guidance for assessing the significance of noise disturbance against Conservation Objectives of harbour porpoise SACs (England, Wales & Northern Ireland). JNCC Report No. 65

Step 4 Screening Determination Statement

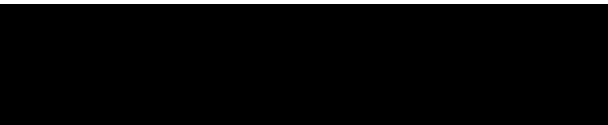
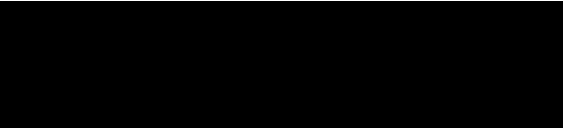
The assessment of significant effects:

On the basis of the information on file, and having regard to:

- The nature and scale of the proposed development
- The distance to the nearest European sites
- The potential for in-combination effects with other plans and projects
- Disturbance from underwater noise
- Visual & above water noise disturbance

Having considered the legal framework applicable to Appropriate Assessment, it is concluded that the proposed maritime usage by Dublin City Council to carry out ground investigations works and environmental surveys (LIC230007) in the River Liffey, Dublin City, will require Stage 2 Appropriate Assessment. It is concluded beyond reasonable scientific doubt, on the basis of objective scientific information following screening, that the proposed project, either individually or in combination with other plans or projects, will have a significant effect on a European site.

Conclusion

	Tick as appropriate	Recommendation
(i) It is clear that there is no likelihood of significant/possible effects on a European site		
(ii) It is uncertain whether the proposal will have a significant/possible effect on a European site	<input checked="" type="checkbox"/>	Proceed to Stage 2 Appropriate Assessment NIS is required
(iii) Significant effects are likely		
Signature and Date of Recommending Officer	 1 st October 2024	
Signature and Date of Decision Maker	 1 st October 2024	

Appendix 1

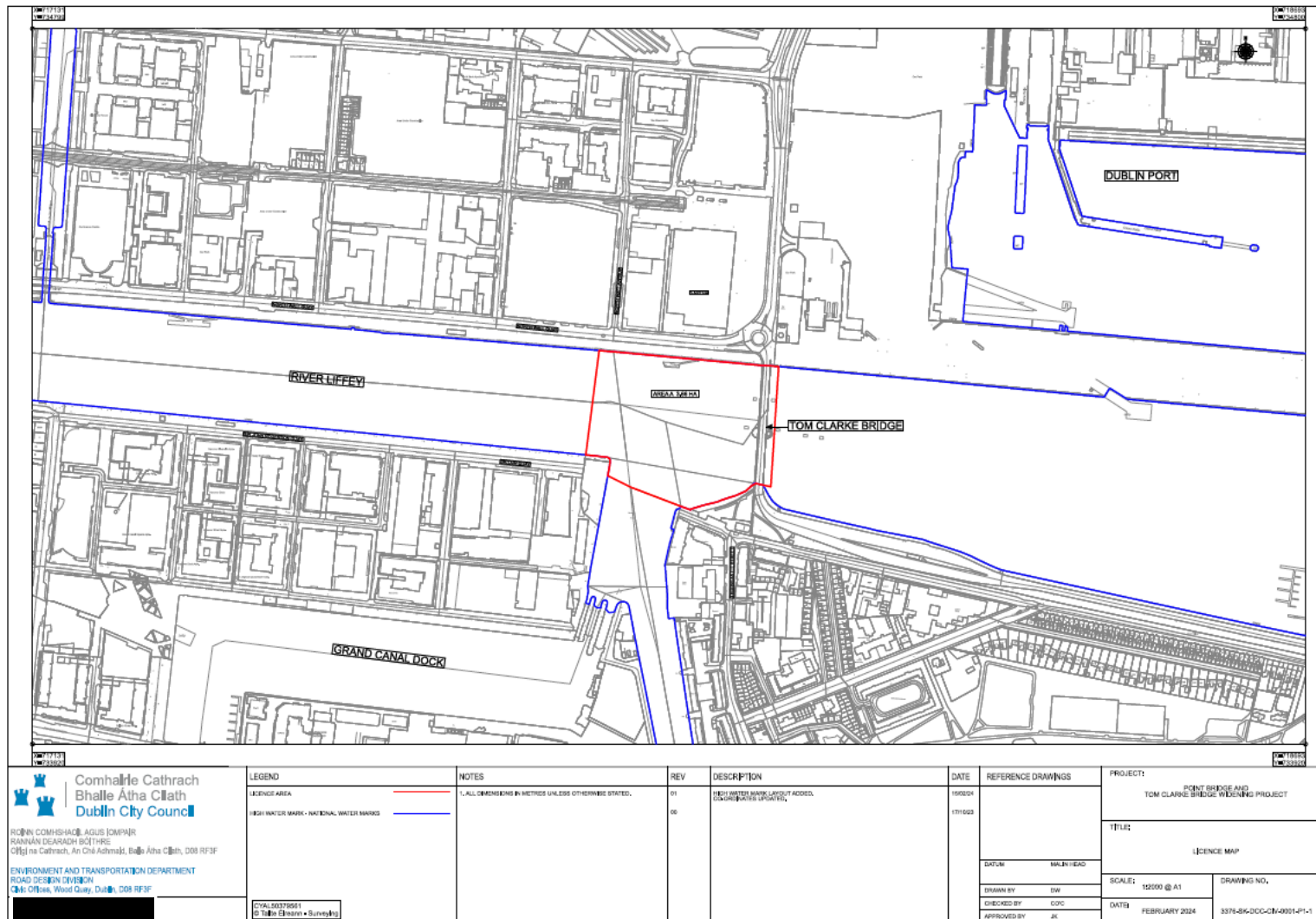


Figure 1 – Proposed Maritime Usage Licence Area